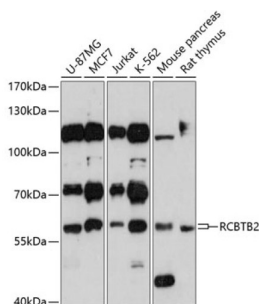


RCC1 And BTB Domain Containing Protein 2 (RCBTB2) Antibody

Catalogue No.: abx002736



Western blot analysis of extracts of various cell lines using RCBTB2 Antibody (1/3000 dilution).

RCBTB2 Antibody is a Rabbit Polyclonal antibody against RCBTB2. This gene encodes a protein containing two C-terminal BTB/POZ domains that is related to regulator of chromosome condensation (RCC). The encoded protein may act as a guanine nucleotide exchange factor. This gene is observed to be lost or underexpressed in prostate cancers. There is a pseudogene of this gene on chromosome 10. Alternative splicing results in multiple transcript variants.

Target: RCC1 And BTB Domain Containing Protein 2 (RCBTB2)

Clonality: Polyclonal

Reactivity: Human, Mouse, Rat

Tested Applications: WB

Host: Rabbit

Recommended dilutions: WB: 1/500 - 1/2000. Optimal dilutions/concentrations should be determined by the end user.

Conjugation: Unconjugated

Immunogen: Recombinant fusion protein corresponding to human RCBTB2

Isotype: IgG

Form: Liquid

Purification: Purified by affinity chromatography.

Storage: Aliquot and store at -20°C. Avoid repeated freeze/thaw cycles.

UniProt Primary AC: O95199 ([UniProt](#), [ExPASy](#))

Gene Symbol: RCBTB2

Datasheet

Version: 4.0.0

Revision date: 11 Mar 2025



GeneID: [1102](#)

NCBI Accession: NP_001259.1

KEGG: hsa:1102

String: [9606.ENSP00000389910](#)

Molecular Weight: Calculated MW: 57 kDa/60 kDa
Observed MW: 60 kDa

Buffer: PBS, pH 7.3, containing 0.01% thiomersal, 50% glycerol.

Concentration: 1 mg/ml

Note: THIS PRODUCT IS FOR RESEARCH USE ONLY. NOT FOR USE IN DIAGNOSTIC, THERAPEUTIC OR COSMETIC PROCEDURES. NOT FOR HUMAN OR ANIMAL CONSUMPTION.

For Reference Only