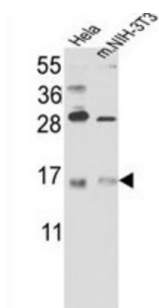
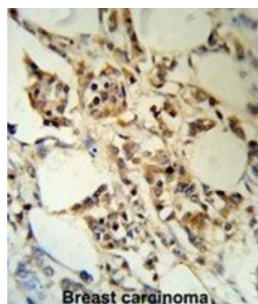
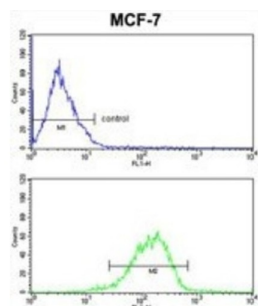


Putative RNA-Binding Protein 3 (RBM3) Antibody

Catalogue No.: abx033373



RBM3 is a member of the glycine-rich RNA-binding protein family and a protein with one RNA recognition motif (RRM) domain. Expression of this protein is induced by cold shock and low oxygen tension.

Target: Putative RNA-Binding Protein 3 (RBM3)

Clonality: Polyclonal

Reactivity: Human, Mouse

Tested Applications: ELISA, WB, IHC, FCM

Host: Rabbit

Recommended dilutions: WB: 1/1000, IHC-P: 1/50 - 1/100, FCM: 1/10 - 1/50. Not tested in IHC-F. Optimal dilutions/concentrations should be determined by the end user.

Datasheet

Version: 2.0.0
Revision date: 17 Jul 2025



| | |
|----------------------------|--|
| Conjugation: | Unconjugated |
| Immunogen: | KLH-conjugated synthetic peptide between 128-157 amino acids from the C-terminal region of human RBM3. |
| Isotype: | IgG |
| Form: | Liquid |
| Purification: | Purified Rabbit Polyclonal Antibody. |
| Storage: | Aliquot and store at -20°C. Avoid repeated freeze/thaw cycles. |
| UniProt Primary AC: | P98179 (UniProt , ExPASy) |
| KEGG: | hsa:5935 |
| String: | 9606.ENSP00000365950 |
| Molecular Weight: | Calculated MW: 17.2 kDa |
| Buffer: | PBS containing 0.09% sodium azide. |
| Specificity: | Predicted to react with Rat RBM3. |
| Note: | THIS PRODUCT IS FOR RESEARCH USE ONLY. NOT FOR USE IN DIAGNOSTIC, THERAPEUTIC OR COSMETIC PROCEDURES. NOT FOR HUMAN OR ANIMAL CONSUMPTION. |