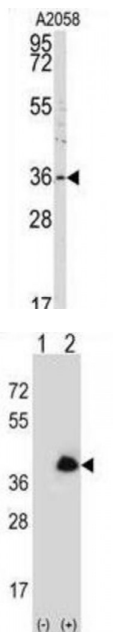
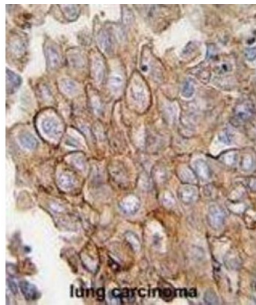


Annexin A2 (ANXA2) Antibody

Catalogue No.: abx033387



ANXA2 is a member of the annexin family. Members of this calcium-dependent phospholipid-binding protein family play a role in the regulation of cellular growth and in signal transduction pathways. This protein functions as an autocrine factor which heightens osteoclast formation and bone resorption.

Target: Annexin A2 (ANXA2)

Clonality: Polyclonal

Reactivity: Human

Tested Applications: ELISA, WB, IHC, IF/ICC

Host: Rabbit

Recommended dilutions: WB: 1/1000, IHC-P: 1/10 - 1/50, IF/ICC: 1/10 - 1/50. Not tested in IHC-F. Optimal dilutions/concentrations should be determined by the end user.

Datasheet

Version: 2.0.0

Revision date: 29 May 2024



Conjugation:	Unconjugated
Immunogen:	KLH-conjugated synthetic peptide between 287-313 amino acids from the C-terminal region of human ANXA2.
Isotype:	IgG
Form:	Liquid
Purification:	Purified Rabbit Polyclonal Antibody.
Storage:	Aliquot and store at -20°C. Avoid repeated freeze/thaw cycles.
UniProt Primary AC:	P07355 (UniProt , ExPASy)
NCBI Accession:	NP_001002857.1, NP_001002858.1, NP_001129487.1, NP_004030.1
KEGG:	hsa:302
String:	9606.ENSP00000346032
Molecular Weight:	Calculated MW: 38.6 kDa
Buffer:	PBS containing 0.09% sodium azide.
Specificity:	Predicted to react with Mouse, Rat and Pig ANXA2.
Note:	This product is for research use only.