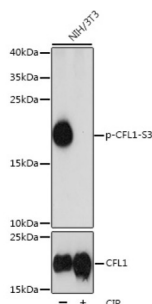
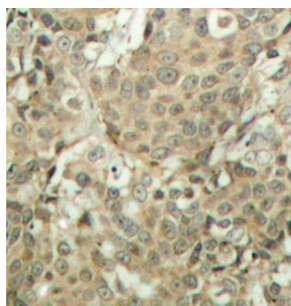


CFL1 (pS3) Antibody

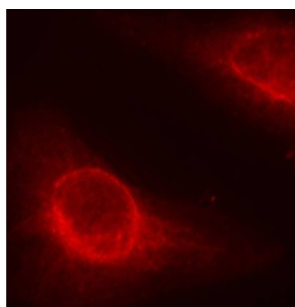
Catalogue No.: abx000230



Western blot analysis of lysates from NIH/3T3 cells, using Phospho-CFL1-S3 Antibody. NIH/3T3 cells were treated by CIP(20uL/400ul) at 37 °C for 1 hour. Secondary antibody: HRP-conjugated Goat anti-Rabbit IgG (H+L) at 1/10000 dilution. Lysates/proteins: 25 µg per lane. Blocking buffer: 3% BSA. Exposure time: 3s.



Immunohistochemistry analysis of paraffin-embedded Human breast carcinoma tissue, using Phospho-CFL1-S3 Antibody. Microwave antigen retrieval performed in 0.01 M Tris/EDTA Buffer (pH 9.0) prior to IHC staining.



Immunofluorescence analysis of methanol-fixed HeLa cells using Phospho-CFL1-S3 Antibody.

CFL1 (pS3) Antibody is a Rabbit Polyclonal antibody against CFL1 (pS3). The protein encoded by this gene can polymerize and depolymerize F-actin and G-actin in a pH-dependent manner. Increased phosphorylation of this protein by LIM kinase aids in Rho-induced reorganization of the actin cytoskeleton. Cofilin is a widely distributed intracellular actin-modulating protein that binds and depolymerizes filamentous F-actin and inhibits the polymerization of monomeric G-actin in a pH-dependent manner. It is involved in the translocation of actin-cofilin complex from cytoplasm to nucleus.

Target:	CFL1 (pS3)
Clonality:	Polyclonal
Reactivity:	Human, Mouse, Rat
Tested Applications:	ELISA, WB, IHC, IF/ICC
Host:	Rabbit

Datasheet

Version: 4.0.0
Revision date: 05 Oct 2025



Recommended dilutions: ELISA: 1 µg/ml, WB: 1/500 - 1/2000, IHC-P: 1/50 - 1/100, IF/ICC: 1/100 - 1/200. Not tested in IHC-F. Optimal dilutions/concentrations should be determined by the end user.

Conjugation: Unconjugated

Immunogen: Synthetic peptide corresponding to CFL1 (pS3). The exact sequence is proprietary.

Isotype: IgG

Form: Liquid

Purification: Purified by affinity chromatography.

Storage: Aliquot and store at -20°C. Avoid repeated freeze/thaw cycles.

UniProt Primary AC: P23528 ([UniProt](#), [ExPASy](#))

Gene Symbol: CFL1

GeneID: [1072](#)

NCBI Accession: NP_005498.1

KEGG: hsa:1072

String: [9606.ENSP00000432660](#)

Molecular Weight: Calculated MW: 19 kDa
Observed MW: 18 kDa

Buffer: PBS, pH 7.3, containing 0.01% thimerosal, 50% glycerol.

Concentration: > 0.2 mg/ml

Note: THIS PRODUCT IS FOR RESEARCH USE ONLY. NOT FOR USE IN DIAGNOSTIC, THERAPEUTIC OR COSMETIC PROCEDURES. NOT FOR HUMAN OR ANIMAL CONSUMPTION.