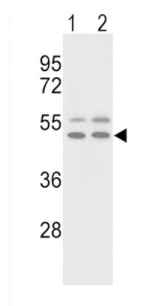
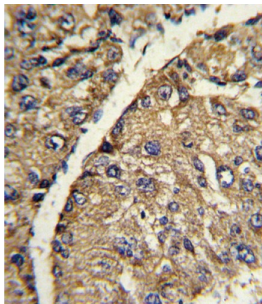
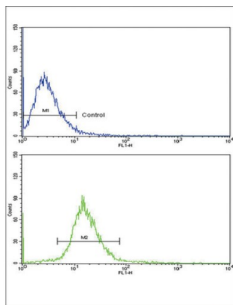


Vitronectin (VTN) Antibody

Catalogue No.: abx033417



VTN is a member of the pexin family. This protein is found in serum and tissues and promotes cell adhesion and spreading, inhibits the membrane-damaging effect of the terminal cytolytic complement pathway, and binds to several serpin serine protease inhibitors. The protein is a secreted protein and exists in either a single chain form or a clipped, two chain form held together by a disulfide bond.

Target:	Vitronectin (VTN)
Clonality:	Polyclonal
Reactivity:	Human
Tested Applications:	ELISA, WB, IHC, FCM
Host:	Rabbit

Recommended dilutions: WB: 1/1000, IHC-P: 1/10 - 1/50, FCM: 1/10 - 1/50. Not tested in IHC-F. Optimal dilutions/concentrations should be determined by the end user.

Datasheet

Version: 3.0.0
Revision date: 02 Sep 2025



Conjugation:	Unconjugated
Immunogen:	KLH-conjugated synthetic peptide between 352-379 amino acids from the C-terminal region of human VTN.
Isotype:	IgG
Form:	Liquid
Purification:	Purified Rabbit Polyclonal Antibody.
Storage:	Aliquot and store at -20°C. Avoid repeated freeze/thaw cycles.
UniProt Primary AC:	P04004 (UniProt , ExPASy)
KEGG:	hsa:7448
String:	9606.ENSP00000226218
Molecular Weight:	Calculated MW: 54.3 kDa
Buffer:	PBS containing 0.09% sodium azide.
Note:	THIS PRODUCT IS FOR RESEARCH USE ONLY. NOT FOR USE IN DIAGNOSTIC, THERAPEUTIC OR COSMETIC PROCEDURES. NOT FOR HUMAN OR ANIMAL CONSUMPTION.