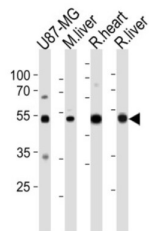


Alanine Aminotransferase 1 / ALT (GPT) Antibody

Catalogue No.: abx033420



GPT (Glutamate-pyruvate transaminase), also known as alanine aminotransferase, catalyzes the reversible conversion of L-alanine and alpha-ketoglutarate to L-glutamate and pyruvate. This protein has 2 distinct molecular and genetic forms: one cytoplasmic (soluble) (GPT1) and one mitochondrial (GPT2). See ALTQTL1 and ALTQTL2 for information on quantitative trait loci influencing the plasma level of alanine aminotransferase.

| | |
|-------------------------------|---|
| Target: | Alanine Aminotransferase 1 / ALT (GPT) |
| Clonality: | Polyclonal |
| Reactivity: | Human, Mouse, Rat |
| Tested Applications: | ELISA, WB, IHC |
| Host: | Rabbit |
| Recommended dilutions: | WB: 1/1000, IHC-P: 1/100. Not tested in IHC-F. Optimal dilutions/concentrations should be determined by the end user. |
| Conjugation: | Unconjugated |
| Immunogen: | KLH-conjugated synthetic peptide between 118-144 amino acids from the N-terminal region of human GPT. |
| Isotype: | IgG |
| Form: | Liquid |
| Purification: | Purified Rabbit Polyclonal Antibody. |
| Storage: | Aliquot and store at -20°C. Avoid repeated freeze/thaw cycles. |
| UniProt Primary AC: | P24298 (UniProt , ExPASy) |
| NCBI Accession: | NP_005300.1 |

Datasheet

Version: 2.0.0

Revision date: 10 Jun 2025



KEGG: hsa:2875

String: [9606.ENSP00000378408](#)

Molecular Weight: Calculated MW: 54.6 kDa

Buffer: PBS containing 0.09% sodium azide.

Specificity: Predicted to react with Cow GPT.

Note: THIS PRODUCT IS FOR RESEARCH USE ONLY. NOT FOR USE IN DIAGNOSTIC, THERAPEUTIC OR COSMETIC PROCEDURES. NOT FOR HUMAN OR ANIMAL CONSUMPTION.

For Reference Only