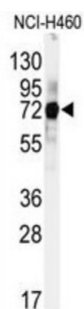
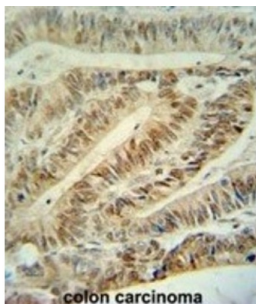
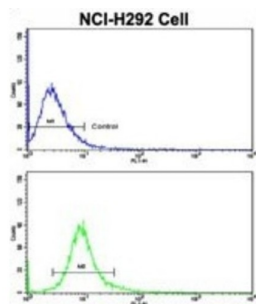


Cullin 5 (CUL5) Antibody

Catalogue No.: abx033487



Cullin 5 is a core component of multiple SCF-like ECS (Elongin-Cullin 2/5-SOCS-box protein) E3 ubiquitin-protein ligase complexes, which mediate the ubiquitination and subsequent proteasomal degradation of target proteins. As a scaffold protein may contribute to catalysis through positioning of the substrate and the ubiquitin-conjugating enzyme. The functional specificity of the E3 ubiquitin-protein ligase complex depends on the variable substrate recognition component. ECS (SOCS1) seems to direct ubiquitination of JAK2. It seems to be involved proteasomal degradation of p53/TP53 stimulated by adenovirus E1B-55 kDa protein and may form a cell surface vasopressin receptor.

Target:	Cullin 5 (CUL5)
Clonality:	Polyclonal
Reactivity:	Human
Tested Applications:	ELISA, WB, IHC, FCM
Host:	Rabbit

Datasheet

Version: 3.0.0
Revision date: 24 May 2025



Recommended dilutions: WB: 1/1000, IHC-P: 1/50 - 1/100, FCM: 1/10 - 1/50. Not tested in IHC-F. Optimal dilutions/concentrations should be determined by the end user.

Conjugation: Unconjugated

Immunogen: KLH-conjugated synthetic peptide between 747-774 amino acids from the C-terminal region of human CUL5.

Isotype: IgG

Form: Liquid

Purification: Purified Rabbit Polyclonal Antibody.

Storage: Aliquot and store at -20°C. Avoid repeated freeze/thaw cycles.

UniProt Primary AC: Q93034 ([UniProt](#), [ExPASy](#))

KEGG: hsa:8065

String: [9606.ENSP00000376808](#)

Molecular Weight: Calculated MW: 91 kDa

Buffer: PBS containing 0.09% sodium azide.

Specificity: Predicted to react with Rabbit CUL5.

Note: THIS PRODUCT IS FOR RESEARCH USE ONLY. NOT FOR USE IN DIAGNOSTIC, THERAPEUTIC OR COSMETIC PROCEDURES. NOT FOR HUMAN OR ANIMAL CONSUMPTION.