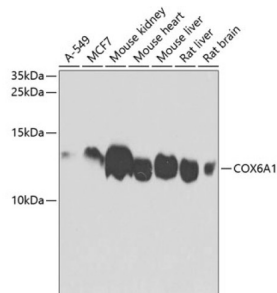
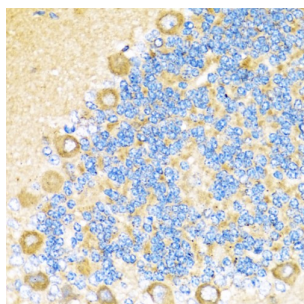


## Cytochrome C Oxidase Subunit 6A1 (COX6A1) Antibody

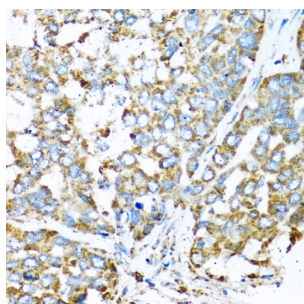
Catalogue No.: abx002749



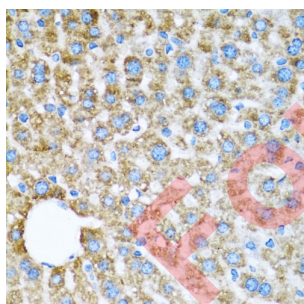
Western blot analysis of extracts of various cell lines using COX6A1 Antibody (1/1000 dilution).



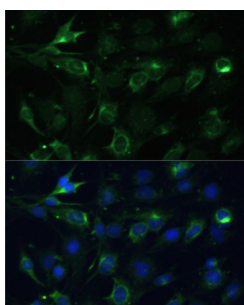
Immunohistochemistry of paraffin-embedded Rat cerebellum using COX6A1 Antibody (1/100 dilution, 40x lens).



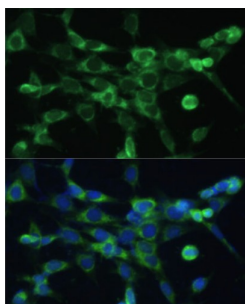
Immunohistochemistry of paraffin-embedded Human liver cancer using COX6A1 Antibody (1/100 dilution, 40x lens).



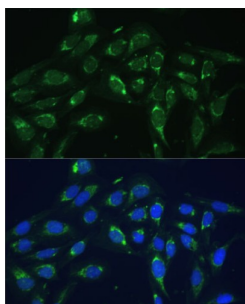
Immunohistochemistry of paraffin-embedded Mouse liver using COX6A1 Antibody (1/100 dilution, 40x lens).



Immunofluorescence analysis of C6 cells using COX6A1 Antibody (1/100 dilution, 40x lens). Blue: DAPI for nuclear staining.



Immunofluorescence analysis of NIH-3T3 cells using COX6A1 Antibody (1/100 dilution, 40x lens). Blue: DAPI for nuclear staining.



Immunofluorescence analysis of U-2 OS cells using COX6A1 Antibody (1/100 dilution, 40x lens). Blue: DAPI for nuclear staining.

COX6A1 Antibody is a Rabbit Polyclonal antibody against COX6A1. Cytochrome c oxidase (COX), the terminal enzyme of the mitochondrial respiratory chain, catalyzes the electron transfer from reduced cytochrome c to oxygen. It is a heteromeric complex consisting of 3 catalytic subunits encoded by mitochondrial genes and multiple structural subunits encoded by nuclear genes. The mitochondrially-encoded subunits function in the electron transfer and the nuclear-encoded subunits may function in the regulation and assembly of the complex. This nuclear gene encodes polypeptide 1 (liver isoform) of subunit VIa, and polypeptide 1 is found in all non-muscle tissues. Polypeptide 2 (heart/muscle isoform) of subunit VIa is encoded by a different gene, and is present only in striated muscles. These two polypeptides share 66% amino acid sequence identity. It has been reported that there may be several pseudogenes on chromosomes 1, 6, 7q21, 7q31-32 and 12. However, only one pseudogene (COX6A1P) on chromosome 1p31.1 has been documented.

**Target:** Cytochrome C Oxidase Subunit 6A1 (COX6A1)

**Clonality:** Polyclonal

**Reactivity:** Human, Mouse, Rat

**Tested Applications:** WB, IHC, IF/ICC

**Host:** Rabbit

**Recommended dilutions:** WB: 1/200 - 1/2000, IHC-P: 1/20 - 1/200, IF/ICC: 1/50 - 1/200. Not tested in IHC-F. Optimal dilutions/concentrations should be determined by the end user.

**Conjugation:** Unconjugated

**Immunogen:** Recombinant fusion protein corresponding to human COX6A1

**Isotype:** IgG

# Datasheet

Version: 3.0.0  
Revision date: 22 Jun 2025



<b>Form:</b>	Liquid
<b>Purification:</b>	Purified by affinity chromatography.
<b>Storage:</b>	Aliquot and store at -20°C. Avoid repeated freeze/thaw cycles.
<b>UniProt Primary AC:</b>	P12074 ( <a href="#">UniProt</a> , <a href="#">ExPASy</a> )
<b>Gene Symbol:</b>	COX6A1
<b>GeneID:</b>	<a href="#">1337</a>
<b>NCBI Accession:</b>	NP_004364.2
<b>KEGG:</b>	hsa:1337
<b>String:</b>	<a href="#">9606.ENSP00000229379</a>
<b>Molecular Weight:</b>	Calculated MW: 12 kDa Observed MW: 12 kDa
<b>Buffer:</b>	PBS, pH 7.3, containing 0.02% sodium azide, 50% glycerol.
<b>Concentration:</b>	1 mg/ml
<b>Note:</b>	THIS PRODUCT IS FOR RESEARCH USE ONLY. NOT FOR USE IN DIAGNOSTIC, THERAPEUTIC OR COSMETIC PROCEDURES. NOT FOR HUMAN OR ANIMAL CONSUMPTION.