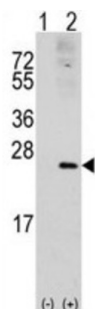


Ras Related C3 Botulinum Toxin Substrate 1 (RAC1) Antibody

Catalogue No.: abx033488



RAC1 is a GTPase belonging to the RAS superfamily of small GTP-binding proteins. It is a pleiotropic regulator of many cellular processes, including the cell cycle, cell-cell adhesion, motility (through the actin network), and of epithelial differentiation (proposed to be necessary for maintaining epidermal stem cells).

Target:	Ras Related C3 Botulinum Toxin Substrate 1 (RAC1)
Clonality:	Polyclonal
Reactivity:	Human, Rat
Tested Applications:	ELISA, WB
Host:	Rabbit
Recommended dilutions:	WB: 1/2000. Optimal dilutions/concentrations should be determined by the end user.
Conjugation:	Unconjugated
Immunogen:	KLH-conjugated synthetic peptide between 49-78 amino acids from human RAC1.
Isotype:	IgG
Form:	Liquid
Purification:	Purified through a protein A column, followed by peptide affinity purification.
Storage:	Aliquot and store at -20°C. Avoid repeated freeze/thaw cycles.
UniProt Primary AC:	P63000 (UniProt , ExPASy)
NCBI Accession:	NP_008839.2, NP_061485.1

Datasheet

Version: 2.0.0

Revision date: 20 Aug 2025



KEGG: hsa:5879

String: [9606.ENSP00000348461](#)

Molecular Weight: Calculated MW: 21.5 kDa

Buffer: PBS containing 0.09% sodium azide.

Specificity: Predicted to react with Mouse, Cow, Pig, Monkey, Drosophila and C. elegans RAC1.

Note: THIS PRODUCT IS FOR RESEARCH USE ONLY. NOT FOR USE IN DIAGNOSTIC, THERAPEUTIC OR COSMETIC PROCEDURES. NOT FOR HUMAN OR ANIMAL CONSUMPTION.

For Reference Only