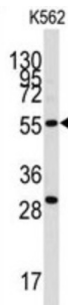
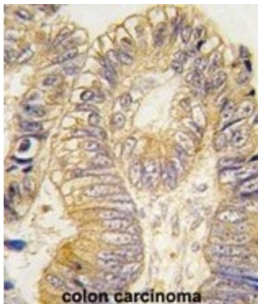


## Chloride Intracellular Channel Protein 5 (CLIC5) Antibody

Catalogue No.: abx033492



WB analysis of K562 cells.



IHC-P analysis of human colon carcinoma tissue, with DAB staining.

Chloride intracellular channels are involved in chloride ion transport within various subcellular compartments. CLIC5 specifically associates with the cytoskeleton of placenta microvilli.

**Target:** Chloride Intracellular Channel Protein 5 (CLIC5)**Clonality:** Polyclonal**Reactivity:** Human**Tested Applications:** ELISA, WB, IHC**Host:** Rabbit**Recommended dilutions:** WB: 1/1000, IHC-P: 1/10 - 1/50. Not tested in IHC-F. Optimal dilutions/concentrations should be determined by the end user.**Conjugation:** Unconjugated**Immunogen:** Human recombinant CLIC5 protein.**Isotype:** IgG**Form:** Liquid

# Datasheet

Version: 4.0.0  
Revision date: 15 Jun 2025



<b>Purification:</b>	Purified Rabbit Polyclonal Antibody.
<b>Storage:</b>	Aliquot and store at -20°C. Avoid repeated freeze/thaw cycles.
<b>UniProt Primary AC:</b>	Q9NZA1 ( <a href="#">UniProt</a> , <a href="#">ExPASy</a> )
<b>String:</b>	<a href="#">9606.ENSP00000185206</a>
<b>Molecular Weight:</b>	Calculated MW: 46.5 kDa
<b>Buffer:</b>	PBS containing 0.09% sodium azide.
<b>Note:</b>	THIS PRODUCT IS FOR RESEARCH USE ONLY. NOT FOR USE IN DIAGNOSTIC, THERAPEUTIC OR COSMETIC PROCEDURES. NOT FOR HUMAN OR ANIMAL CONSUMPTION.

For Reference Only