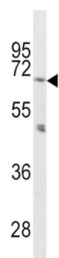
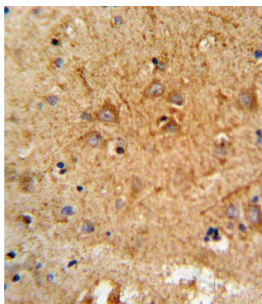
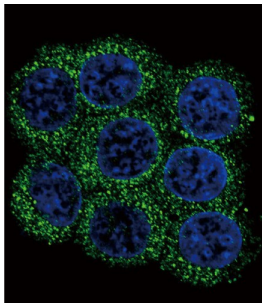


## Proprotein Convertase Subtilisin/Kexin Type 2 (PCSK2) Antibody

Catalogue No.: abx033527



PCSK2 belongs to the subtilisin-like proprotein convertase family. The members of this family are proprotein convertases that process latent precursor proteins into their biologically active products. This protein is a proinsulin-processing enzyme that plays a key role in regulating insulin biosynthesis. The protein is also known to cleave proopiomelanocortin, proenkephalin, prodynorphin and proluteinizing-hormone-releasing hormone.

**Target:** Proprotein Convertase Subtilisin/Kexin Type 2 (PCSK2)

**Clonality:** Polyclonal

**Reactivity:** Human, Mouse

**Tested Applications:** ELISA, WB, IHC, IF/ICC, FCM

**Host:** Rabbit

**Recommended dilutions:** WB: 1/1000, IHC-P: 1/10 - 1/50, IF/ICC: 1/10 - 1/50, FCM: 1/10 - 1/50. Not tested in IHC-F. Optimal dilutions/concentrations should be determined by the end user.

# Datasheet

Version: 2.0.0

Revision date: 09 Sep 2025



<b>Conjugation:</b>	Unconjugated
<b>Immunogen:</b>	KLH-conjugated synthetic peptide between 87-116 amino acids from the N-terminal region of human PCSK2.
<b>Isotype:</b>	IgG
<b>Form:</b>	Liquid
<b>Purification:</b>	Purified Rabbit Polyclonal Antibody.
<b>Storage:</b>	Aliquot and store at -20°C. Avoid repeated freeze/thaw cycles.
<b>UniProt Primary AC:</b>	P16519 ( <a href="#">UniProt</a> , <a href="#">ExPASy</a> )
<b>KEGG:</b>	hsa:5126
<b>String:</b>	<a href="#">9606.ENSP00000262545</a>
<b>Molecular Weight:</b>	Calculated MW: 70.6 kDa
<b>Buffer:</b>	PBS containing 0.09% sodium azide.
<b>Specificity:</b>	Predicted to react with Rat and Pig PCSK2.
<b>Note:</b>	THIS PRODUCT IS FOR RESEARCH USE ONLY. NOT FOR USE IN DIAGNOSTIC, THERAPEUTIC OR COSMETIC PROCEDURES. NOT FOR HUMAN OR ANIMAL CONSUMPTION.