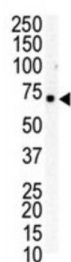
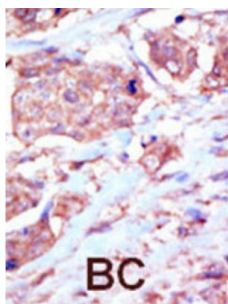


Ephrin Type-B Receptor 6 (EphB6) Antibody

Catalogue No.: abx033539



Ephrin receptors and their ligands, the ephrins, mediate numerous developmental processes, particularly in the nervous system. Based on their structures and sequence relationships, ephrins are divided into the ephrin-A (EFNA) class, which are anchored to the membrane by a glycosylphosphatidylinositol linkage, and the ephrin-B (EFNB) class, which are transmembrane proteins. The Eph family of receptors are divided into 2 groups based on the similarity of their extracellular domain sequences and their affinities for binding ephrin-A and ephrin-B ligands. Ephrin receptors make up the largest subgroup of the receptor tyrosine kinase (RTK) family. EphB6 lacks the kinase activity of most receptor tyrosine kinases and binds to ephrin-B ligands.

Target: Ephrin Type-B Receptor 6 (EphB6)

Clonality: Polyclonal

Reactivity: Human

Tested Applications: ELISA, WB, IHC

Host: Rabbit

Recommended dilutions: WB: 1/1000, IHC-P: 1/50 - 1/100. Not tested in IHC-F. Optimal dilutions/concentrations should be determined by the end user.

Conjugation: Unconjugated

Immunogen: KLH-conjugated synthetic peptide between 990-1021 amino acids from the C-terminal region of human EphB6.

Isotype: IgG

Datasheet

Version: 3.0.0
Revision date: 12 Jul 2025



Form:	Liquid
Purification:	Purified through a protein G column, eluted with high and low pH buffers and neutralized immediately, followed by dialysis against PBS.
Storage:	Aliquot and store at -20°C. Avoid repeated freeze/thaw cycles.
UniProt Primary AC:	O15197 (UniProt , ExPASy)
Gene Symbol:	EPHB6
NCBI Accession:	NP_001267723.1, NP_001267724.1, NP_004436.3
KEGG:	hsa:2051
String:	9606.ENSP00000481994
Molecular Weight:	Calculated MW: 111 kDa
Buffer:	PBS containing 0.09% sodium azide.
Note:	THIS PRODUCT IS FOR RESEARCH USE ONLY. NOT FOR USE IN DIAGNOSTIC, THERAPEUTIC OR COSMETIC PROCEDURES. NOT FOR HUMAN OR ANIMAL CONSUMPTION.

For Reference Only