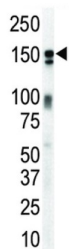
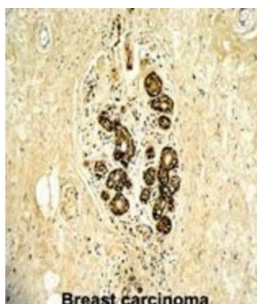
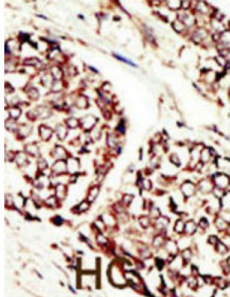


# V-Erb B2 Erythroblastic Leukemia Viral Oncogene Homolog 3 (ERBB3) Antibody

Catalogue No.: abx033547



ErbB3, a member of the EGF receptor family, binds and is activated by neuregulins and NTAK. It potentially forms a heterodimer with each of the other ERBB receptors. This protein is predominantly expressed in epithelial tissues and brain. The cytoplasmic part of the receptor may interact with the SH2 or SH3 domains of many signal-transducing proteins. Ligand-binding may increase phosphorylation on tyrosine residues and promote its association with the p85 subunit of phosphatidylinositol 3-kinase. ErbB3 is overexpressed in a subset of human mammary tumors.

<b>Target:</b>	V-Erb B2 Erythroblastic Leukemia Viral Oncogene Homolog 3 (ERBB3)
<b>Clonality:</b>	Polyclonal
<b>Reactivity:</b>	Human, Mouse
<b>Tested Applications:</b>	ELISA, WB, IHC, FCM
<b>Host:</b>	Rabbit

# Datasheet

Version: 3.0.0

Revision date: 29 Aug 2025



**Recommended dilutions:** WB: 1/1000, IHC-P: 1/50 - 1/100, FCM: 1/10 - 1/50. Not tested in IHC-F. Optimal dilutions/concentrations should be determined by the end user.

**Conjugation:** Unconjugated

**Immunogen:** KLH-conjugated synthetic peptide between 24-55 amino acids from the N-terminal region of human ERBB3.

**Isotype:** IgG

**Form:** Liquid

**Purification:** Purified through a protein G column, eluted with high and low pH buffers and neutralized immediately, followed by dialysis against PBS.

**Storage:** Aliquot and store at -20°C. Avoid repeated freeze/thaw cycles.

**UniProt Primary AC:** P21860 ([UniProt](#), [ExPASy](#))

**NCBI Accession:** NP\_001005915.1, NP\_001973.2

**KEGG:** hsa:2065

**String:** [9606.ENSP00000267101](#)

**Molecular Weight:** Calculated MW: 148 kDa

**Buffer:** PBS containing 0.09% sodium azide.

**Note:** THIS PRODUCT IS FOR RESEARCH USE ONLY. NOT FOR USE IN DIAGNOSTIC, THERAPEUTIC OR COSMETIC PROCEDURES. NOT FOR HUMAN OR ANIMAL CONSUMPTION.