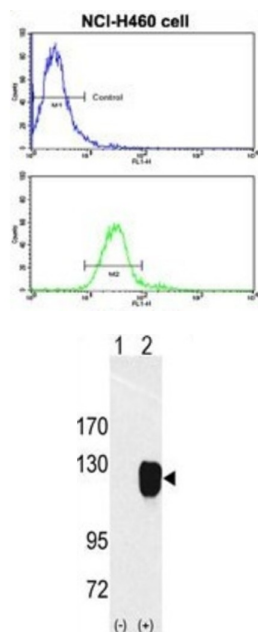


## Receptor Tyrosine Kinase Like Orphan Receptor 1 (ROR1) Antibody

Catalogue No.: abx033600



ROR1 is a receptor protein tyrosine kinase whose cellular role has not been determined. It is a type I membrane protein and belongs to the ROR subfamily of cell surface receptors. Studies of a similar protein in mouse suggest that this protein may interact with another receptor protein tyrosine kinase and may be involved in skeletal and cardiac development.

<b>Target:</b>	Receptor Tyrosine Kinase Like Orphan Receptor 1 (ROR1)
<b>Clonality:</b>	Polyclonal
<b>Reactivity:</b>	Mouse
<b>Tested Applications:</b>	ELISA, WB, FCM
<b>Host:</b>	Rabbit
<b>Recommended dilutions:</b>	WB: 1/1000, FCM: 1/10 - 1/50. Optimal dilutions/concentrations should be determined by the end user.
<b>Conjugation:</b>	Unconjugated
<b>Immunogen:</b>	KLH-conjugated synthetic peptide between 32-62 amino acids from the N-terminal region of human ROR1.
<b>Isotype:</b>	IgG
<b>Form:</b>	Liquid

# Datasheet

Version: 3.0.0

Revision date: 21 Aug 2025



<b>Purification:</b>	Purified through a protein G column, eluted with high and low pH buffers and neutralized immediately, followed by dialysis against PBS.
<b>Storage:</b>	Aliquot and store at -20°C. Avoid repeated freeze/thaw cycles.
<b>UniProt Primary AC:</b>	Q01973 ( <a href="#">UniProt</a> , <a href="#">ExPASy</a> )
<b>NCBI Accession:</b>	NP_001077061.1, NP_005003.2
<b>KEGG:</b>	hsa:4919
<b>String:</b>	<a href="#">9606.ENSP00000360120</a>
<b>Molecular Weight:</b>	Calculated MW: 104 kDa
<b>Buffer:</b>	PBS containing 0.09% sodium azide.
<b>Note:</b>	THIS PRODUCT IS FOR RESEARCH USE ONLY. NOT FOR USE IN DIAGNOSTIC, THERAPEUTIC OR COSMETIC PROCEDURES. NOT FOR HUMAN OR ANIMAL CONSUMPTION.

For Reference Only