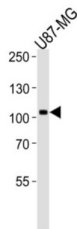


GP145-TrkC (TrkC) Antibody

Catalogue No.: abx033619



TRKC, a member of the insuline receptor subfamily of Tyr protein kinases, is a receptor for neurotrophin-3 (NT-3). Known substrates for the TRK receptors are SHC, PI-3 kinase, and PLCG1. The different isoforms do not have identical signaling properties. The protein is widely expressed, mainly in the nervous tissue. The isoform B is expressed in a relatively large amount in the adult brain comparatively to fetal brain. TRKC is subject to ligand-mediated auto-phosphorylation. The protein structure contains 2 immunoglobulin-like C2-type domains and 2 leucine-rich (LRR) repeats.

Target:	GP145-TrkC (TrkC)
Clonality:	Polyclonal
Reactivity:	Human
Tested Applications:	ELISA, WB, IHC
Host:	Rabbit
Recommended dilutions:	WB: 1/1000, IHC-P: 1/100. Not tested in IHC-F. Optimal dilutions/concentrations should be determined by the end user.
Conjugation:	Unconjugated
Immunogen:	His-tagged recombinant human TrkC.
Isotype:	IgG
Form:	Liquid
Purification:	Purified Rabbit Polyclonal Antibody.
Storage:	Aliquot and store at -20°C. Avoid repeated freeze/thaw cycles.
UniProt Primary AC:	Q16288 (UniProt , ExPASy)

Datasheet

Version: 2.0.0

Revision date: 12 Oct 2025



NCBI Accession: NP_001012338.1, NP_002521.2

KEGG: hsa:4916

String: [9606.ENSP00000354207](#)

Molecular Weight: Calculated MW: 94.4 kDa

Buffer: PBS containing 0.09% sodium azide.

Note: THIS PRODUCT IS FOR RESEARCH USE ONLY. NOT FOR USE IN DIAGNOSTIC, THERAPEUTIC OR COSMETIC PROCEDURES. NOT FOR HUMAN OR ANIMAL CONSUMPTION.

For Reference Only