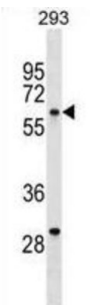
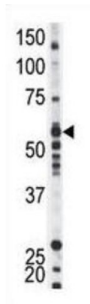
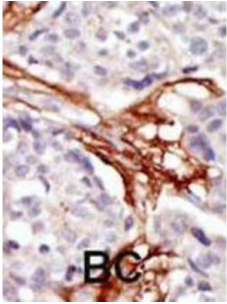


Tyrosine-Protein Kinase Yes (YES1) Antibody

Catalogue No.: abx033647



YES is a member of the Src family of non-receptor tyrosine kinases participating in a wide range of cellular signalling pathways. The gene that encodes YES is the cellular homolog of the Yamaguchi sarcoma virus oncogene. This gene lies in proximity to thymidylate synthase gene on chromosome 18, and a pseudogene of it has mapped to chromosome 22.

Target: Tyrosine-Protein Kinase Yes (YES1)

Clonality: Polyclonal

Reactivity: Human, Mouse

Tested Applications: ELISA, WB, IHC

Host: Rabbit

Recommended dilutions: WB: 1/1000, IHC-P: 1/50 - 1/100. Not tested in IHC-F. Optimal dilutions/concentrations should be determined by the end user.

Datasheet

Version: 2.0.0
Revision date: 28 Sep 2025



| | |
|----------------------------|--|
| Conjugation: | Unconjugated |
| Immunogen: | KLH-conjugated synthetic peptide between 1-30 amino acids from the N-terminal region of human YES1. |
| Isotype: | IgG |
| Form: | Liquid |
| Purification: | Purified through a protein G column, eluted with high and low pH buffers and neutralized immediately, followed by dialysis against PBS. |
| Storage: | Aliquot and store at -20°C. Avoid repeated freeze/thaw cycles. |
| UniProt Primary AC: | P07947 (UniProt , ExpASY) |
| Gene Symbol: | YES1 |
| GeneID: | 7525 |
| OMIM: | 164880 |
| HGNC: | 12841 |
| KEGG: | hsa:7525 |
| Ensembl: | ENSG00000176105 |
| String: | 9606.ENSP00000462468 |
| Molecular Weight: | Calculated MW: 60.8 kDa |
| Buffer: | PBS containing 0.09% sodium azide. |
| Note: | THIS PRODUCT IS FOR RESEARCH USE ONLY. NOT FOR USE IN DIAGNOSTIC, THERAPEUTIC OR COSMETIC PROCEDURES. NOT FOR HUMAN OR ANIMAL CONSUMPTION. |