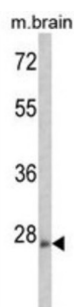
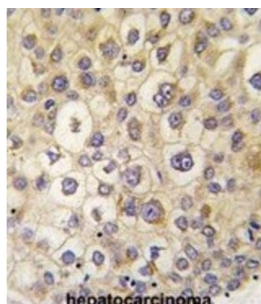


Rho-Related GTP-Binding Protein RhoE (ARHE) Antibody

Catalogue No.: abx033659



Members of the Rho family of Ras-related GTPases, such as ARHE, regulate the organization of the actin cytoskeleton in response to extracellular growth factors. Like Ras (MIM 190020), Rho family members appear to cycle between an inactive GDP-bound form and an active GTP-bound form. Three major regulators of Rho activity have been identified: RhoGDIs, which interact with the GDP-bound Rho proteins to keep them in a resting complex (see MIM 601925) ; GEFs, which promote GDP/GTP exchange leading to activation of Rho proteins (see MIM 601855) ; and GAPs, which stimulate GTP hydrolysis and return the activated Rho protein to its inactive form (see MIM 602680) (Nobes et al., 1998 [PubMed 9531558]).

Target: Rho-Related GTP-Binding Protein RhoE (ARHE)

Clonality: Polyclonal

Reactivity: Human, Mouse, Rat

Tested Applications: ELISA, WB, IHC

Host: Rabbit

Recommended dilutions: WB: 1/1000, IHC-P: 1/10 - 1/50. Not tested in IHC-F. Optimal dilutions/concentrations should be determined by the end user.

Conjugation: Unconjugated

Immunogen: KLH-conjugated synthetic peptide between 133-165 amino acids from the Central region of human ARHE.

Isotype: IgG

Datasheet

Version: 3.0.0

Revision date: 21 Jul 2025



Form:	Liquid
Purification:	Purified Rabbit Polyclonal Antibody.
Storage:	Aliquot and store at -20°C. Avoid repeated freeze/thaw cycles.
UniProt Primary AC:	P61587 (UniProt , ExPASy)
KEGG:	hsa:390
String:	9606.ENSP00000364886
Molecular Weight:	Calculated MW: 27.4 kDa
Buffer:	PBS containing 0.09% sodium azide.
Specificity:	Predicted to react with Pig RND3.
Note:	THIS PRODUCT IS FOR RESEARCH USE ONLY. NOT FOR USE IN DIAGNOSTIC, THERAPEUTIC OR COSMETIC PROCEDURES. NOT FOR HUMAN OR ANIMAL CONSUMPTION.

For Reference Only