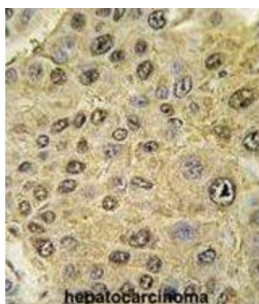
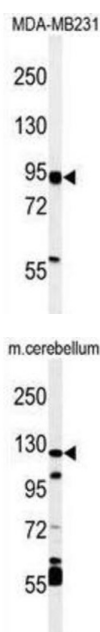


Hypoxia-Inducible Factor 1-Alpha (HIF1a) Antibody

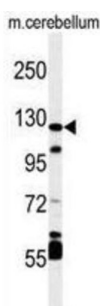
Catalogue No.: abx033664



IHC analysis of formalin-fixed and paraffin-embedded human hepatocarcinoma tissue using HIF1 alpha antibody, with DAB staining.



WB analysis of MDA-MB231 cell lysates, using HIF1 alpha antibody.



WB analysis of mouse cerebellum tissue lysates, using HIF1 alpha antibody.

Hypoxia-inducible factor-1 (HIF1) is a transcription factor found in mammalian cells cultured under reduced oxygen tension that plays an essential role in cellular and systemic homeostatic responses to hypoxia. HIF1 is a heterodimer composed of an alpha subunit and a beta subunit. The beta subunit has been identified as the aryl hydrocarbon receptor nuclear translocator (ARNT).

Target: Hypoxia-Inducible Factor 1-Alpha (HIF1a)

Clonality: Polyclonal

Reactivity: Human, Mouse

Tested Applications: ELISA, WB, IHC, IF/ICC

Host: Rabbit

Recommended dilutions: WB: 1/1000, IHC-P: 1/10 - 1/50, IF/ICC: 1/10 - 1/50. Not tested in IHC-F. Optimal dilutions/concentrations should be determined by the end user.

Datasheet

Version: 3.0.0
Revision date: 05 Jun 2025



Conjugation:	Unconjugated
Immunogen:	KLH-conjugated synthetic peptide between 728-757 amino acids from the C-terminal region of human HIF1Alpha.
Isotype:	IgG
Form:	Liquid
Purification:	Purified Rabbit Polyclonal Antibody.
Storage:	Aliquot and store at -20°C. Avoid repeated freeze/thaw cycles.
UniProt Primary AC:	Q16665 (UniProt , ExPASy)
Molecular Weight:	Calculated MW: 92.7 kDa
Buffer:	PBS containing 0.09% sodium azide.
Note:	THIS PRODUCT IS FOR RESEARCH USE ONLY. NOT FOR USE IN DIAGNOSTIC, THERAPEUTIC OR COSMETIC PROCEDURES. NOT FOR HUMAN OR ANIMAL CONSUMPTION.

For Reference Only