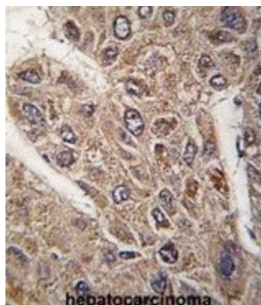


Protein Bicaudal D Homolog 2 (BICD2) Antibody

Catalogue No.: abx033666



BICD2 is one of two human homologs of *Drosophila* bicaudal-D and a member of the Bicoid family. It has been implicated in dynein-mediated, minus end-directed motility along microtubules. It has also been reported to be a phosphorylation target of NIMA related kinase 8.

Target: Protein Bicaudal D Homolog 2 (BICD2)

Clonality: Polyclonal

Reactivity: Human

Tested Applications: ELISA, WB, IHC

Host: Rabbit

Recommended dilutions: WB: 1/1000, IHC-P: 1/10 - 1/50. Not tested in IHC-F. Optimal dilutions/concentrations should be determined by the end user.

Conjugation: Unconjugated

Immunogen: KLH-conjugated synthetic peptide between 787-818 amino acids from the C-terminal region of human BICD2.

Isotype: IgG

Form: Liquid

Datasheet

Version: 6.0.0
Revision date: 13 Jun 2025



Purification:	Purified Rabbit Polyclonal Antibody.
Storage:	Aliquot and store at -20°C. Avoid repeated freeze/thaw cycles.
UniProt Primary AC:	Q8TD16 (UniProt , ExPASy)
KEGG:	hsa:23299
String:	9606.ENSP00000349351
Molecular Weight:	Calculated MW: 93.5 kDa
Buffer:	PBS containing 0.09% sodium azide.
Note:	THIS PRODUCT IS FOR RESEARCH USE ONLY. NOT FOR USE IN DIAGNOSTIC, THERAPEUTIC OR COSMETIC PROCEDURES. NOT FOR HUMAN OR ANIMAL CONSUMPTION.

For Reference Only