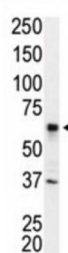


Interleukin 1 Receptor Associated Kinase 2 (IRAK2) Antibody

Catalogue No.: abx033691



Protein kinases are enzymes that transfer a phosphate group from a phosphate donor, generally the γ phosphate of ATP, onto an acceptor amino acid in a substrate protein. By this basic mechanism, protein kinases mediate most of the signal transduction in eukaryotic cells, regulating cellular metabolism, transcription, cell cycle progression, cytoskeletal rearrangement and cell movement, apoptosis, and differentiation. With more than 500 gene products, the protein kinase family is one of the largest families of proteins in eukaryotes. The family has been classified in 8 major groups based on sequence comparison of their tyrosine (PTK) or serine/threonine (STK) kinase catalytic domains. The tyrosine-like kinase (TLK) group consists of 40 tyrosine and serine-threonine kinases such as MLK (mixed-lineage kinase), LISK (LIMK/TESK), IRAK (interleukin-1 receptor-associated kinase), Raf, RIPK (receptor-interacting protein kinase), and STRK (activin and TGF-beta receptors) families.

Target:	Interleukin 1 Receptor Associated Kinase 2 (IRAK2)
Clonality:	Polyclonal
Reactivity:	Human
Tested Applications:	ELISA, WB
Host:	Rabbit
Recommended dilutions:	WB: 1/1000. Optimal dilutions/concentrations should be determined by the end user.
Conjugation:	Unconjugated
Immunogen:	KLH-conjugated synthetic peptide between 3-32 amino acids from the N-terminal region of human IRAK2.
Isotype:	IgG
Form:	Liquid
Purification:	Purified through a protein G column, eluted with high and low pH buffers and neutralized immediately, followed by dialysis against PBS.
Storage:	Aliquot and store at -20°C . Avoid repeated freeze/thaw cycles.

Datasheet

Version: 2.0.0

Revision date: 02 Jun 2024



UniProt Primary AC: O43187 ([UniProt](#), [ExPASy](#))

Gene Symbol: IRAK2

KEGG: hsa:3656

String: [9606.ENSP00000256458](#)

Molecular Weight: Calculated MW: 69.4 kDa

Buffer: PBS containing 0.09% sodium azide.

Note: This product is for research use only.

For Reference Only