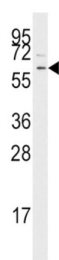
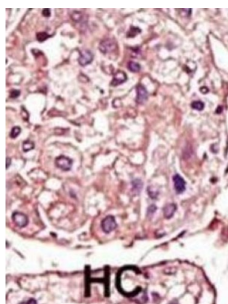


## TGF Beta Receptor I (TGFB1) Antibody

Catalogue No.: abx033704



The protein encoded by this gene forms a heteromeric complex with type II TGF-beta receptors when bound to TGF-beta, transducing the TGF-beta signal from the cell surface to the cytoplasm. The encoded protein is a serine/threonine protein kinase. Mutations in this gene have been associated with Loeys-Dietz aortic aneurysm syndrome (LDAS).

**Target:** TGF Beta Receptor I (TGFB1)

**Clonality:** Polyclonal

**Reactivity:** Human

**Tested Applications:** ELISA, WB, IHC

**Host:** Rabbit

**Recommended dilutions:** WB: 1/1000, IHC-P: 1/50 - 1/100. Not tested in IHC-F. Optimal dilutions/concentrations should be determined by the end user.

**Conjugation:** Unconjugated

**Immunogen:** KLH-conjugated synthetic peptide between 134-163 amino acids from the Central region of human TGF Beta Receptor I.

**Isotype:** IgG

**Form:** Liquid

# Datasheet

Version: 4.0.0

Revision date: 30 Sep 2025



<b>Purification:</b>	Purified through a protein G column, eluted with high and low pH buffers and neutralized immediately, followed by dialysis against PBS.
<b>Storage:</b>	Aliquot and store at -20°C. Avoid repeated freeze/thaw cycles.
<b>UniProt Primary AC:</b>	P36897 ( <a href="#">UniProt</a> , <a href="#">ExPASy</a> )
<b>NCBI Accession:</b>	NP_001124388.1, NP_004603.1
<b>Molecular Weight:</b>	Calculated MW: 56 kDa
<b>Buffer:</b>	PBS containing 0.09% sodium azide.
<b>Specificity:</b>	Predicted to react with Mouse, Rat, Cow and Pig TGFBR1.
<b>Note:</b>	THIS PRODUCT IS FOR RESEARCH USE ONLY. NOT FOR USE IN DIAGNOSTIC, THERAPEUTIC OR COSMETIC PROCEDURES. NOT FOR HUMAN OR ANIMAL CONSUMPTION.

For Reference Only