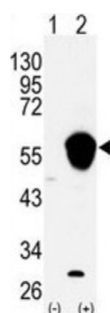
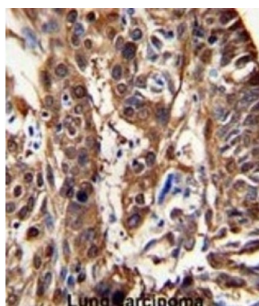
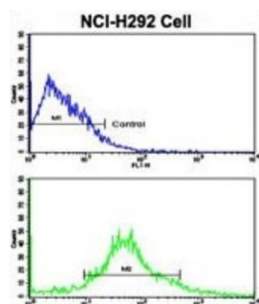


## Aldehyde Dehydrogenase 3 Family Member A1 (ALDH3A1) Antibody

Catalogue No.: abx033715



Aldehyde dehydrogenases oxidize various aldehydes to the corresponding acids. They are involved in the detoxification of alcohol-derived acetaldehyde and in the metabolism of corticosteroids, biogenic amines, neurotransmitters, and lipid peroxidation. ALDH3A1 forms a cytoplasmic homodimer that preferentially oxidizes aromatic and medium-chain (6 carbons or more) saturated and unsaturated aldehyde substrates. The enzyme is thought to promote resistance to UV and 4-hydroxy-2-nonenal-induced oxidative damage in the cornea.

**Target:** Aldehyde Dehydrogenase 3 Family Member A1 (ALDH3A1)

**Clonality:** Polyclonal

**Reactivity:** Human

**Tested Applications:** ELISA, WB, IHC, FCM

**Host:** Rabbit

# Datasheet

Version: 2.0.0  
Revision date: 06 Oct 2025



**Recommended dilutions:** WB: 1/1000, IHC-P: 1/50 - 1/100, FCM: 1/10 - 1/50. Not tested in IHC-F. Optimal dilutions/concentrations should be determined by the end user.

**Conjugation:** Unconjugated

**Immunogen:** KLH-conjugated synthetic peptide between 69-99 amino acids from the N-terminal region of human ALDH3A1.

**Isotype:** IgG

**Form:** Liquid

**Purification:** Purified Rabbit Polyclonal Antibody.

**Storage:** Aliquot and store at -20°C. Avoid repeated freeze/thaw cycles.

**UniProt Primary AC:** P30838 ([UniProt](#), [ExPASy](#))

**KEGG:** hsa:218

**String:** [9606.ENSP00000411821](#)

**Molecular Weight:** Calculated MW: 50.4 kDa

**Buffer:** PBS containing 0.09% sodium azide.

**Note:** THIS PRODUCT IS FOR RESEARCH USE ONLY. NOT FOR USE IN DIAGNOSTIC, THERAPEUTIC OR COSMETIC PROCEDURES. NOT FOR HUMAN OR ANIMAL CONSUMPTION.