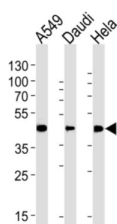
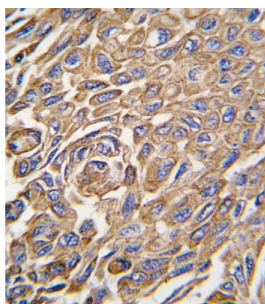


Aldehyde Dehydrogenase 3 Family Member A1 (ALDH3A1) Antibody

Catalogue No.: abx033716



Aldehyde dehydrogenases oxidize various aldehydes to the corresponding acids. They are involved in the detoxification of alcohol-derived acetaldehyde and in the metabolism of corticosteroids, biogenic amines, neurotransmitters, and lipid peroxidation. ALDH3A1 forms a cytoplasmic homodimer that preferentially oxidizes aromatic and medium-chain (6 carbons or more) saturated and unsaturated aldehyde substrates. The enzyme is thought to promote resistance to UV and 4-hydroxy-2-nonenal-induced oxidative damage in the cornea.

Target: Aldehyde Dehydrogenase 3 Family Member A1 (ALDH3A1)

Clonality: Polyclonal

Reactivity: Human

Tested Applications: ELISA, WB, IHC

Host: Rabbit

Recommended dilutions: WB: 1/1000, IHC-P: 1/10 - 1/50. Not tested in IHC-F. Optimal dilutions/concentrations should be determined by the end user.

Conjugation: Unconjugated

Immunogen: KLH-conjugated synthetic peptide between 254-284 amino acids from the Central region of human ALDH3A1.

Isotype: IgG

Datasheet

Version: 2.0.0

Revision date: 08 Oct 2025



Form:	Liquid
Purification:	Purified Rabbit Polyclonal Antibody.
Storage:	Aliquot and store at -20°C. Avoid repeated freeze/thaw cycles.
UniProt Primary AC:	P30838 (UniProt , ExPASy)
NCBI Accession:	NP_000682.3, NP_001128639.1, NP_001128640.1
KEGG:	hsa:218
String:	9606.ENSP00000411821
Molecular Weight:	Calculated MW: 50.4 kDa
Buffer:	PBS containing 0.09% sodium azide.
Specificity:	Predicted to react with Cow ALDH3A1.
Note:	THIS PRODUCT IS FOR RESEARCH USE ONLY. NOT FOR USE IN DIAGNOSTIC, THERAPEUTIC OR COSMETIC PROCEDURES. NOT FOR HUMAN OR ANIMAL CONSUMPTION.

For Reference Only