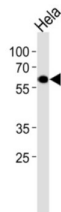


## Estrogen-Related Receptor Gamma (ESRRG) Antibody

Catalogue No.: abx033732



ESRRG is an orphan receptor that acts as transcription activator in the absence of bound ligand. This protein binds specifically to an estrogen response element and activates reporter genes controlled by estrogen response elements.

<b>Target:</b>	Estrogen-Related Receptor Gamma (ESRRG)
<b>Clonality:</b>	Polyclonal
<b>Reactivity:</b>	Human
<b>Tested Applications:</b>	ELISA, WB
<b>Host:</b>	Rabbit
<b>Recommended dilutions:</b>	WB: 1/500 - 1/1000. Optimal dilutions/concentrations should be determined by the end user.
<b>Conjugation:</b>	Unconjugated
<b>Immunogen:</b>	KLH-conjugated synthetic peptide between 189-221 amino acids from the Central region of human ESRRG.
<b>Isotype:</b>	IgG
<b>Form:</b>	Liquid
<b>Purification:</b>	Purified Rabbit Polyclonal Antibody.
<b>Storage:</b>	Aliquot and store at -20°C. Avoid repeated freeze/thaw cycles.
<b>UniProt Primary AC:</b>	P62508 ( <a href="#">UniProt</a> , <a href="#">ExPASy</a> )
<b>NCBI Accession:</b>	NP_001127757.1, NP_001230434.1, NP_001230435.1, NP_001230436.1, NP_001230438.1, NP_001230439.1, NP_001230440.1, NP_001230441.1, NP_001230442.1, NP_001230443.1, NP_001230444.1, NP_001230447.1, NP_001230448.1

# Datasheet

Version: 2.0.0

Revision date: 06 Oct 2025



**KEGG:** hsa:2104

**String:** [9606.ENSP00000355904](#)

**Molecular Weight:** Calculated MW: 51.3 kDa

**Buffer:** PBS containing 0.09% sodium azide.

**Specificity:** Predicted to react with Mouse and Rat ESRRG.

**Note:** THIS PRODUCT IS FOR RESEARCH USE ONLY. NOT FOR USE IN DIAGNOSTIC, THERAPEUTIC OR COSMETIC PROCEDURES. NOT FOR HUMAN OR ANIMAL CONSUMPTION.

For Reference Only