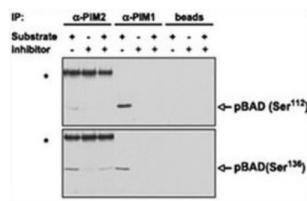


Serine/Threonine-Protein Kinase Pim-2 (PIM2) Antibody

Catalogue No.: abx033773



Pim proteins (Pim-1, Pim-2 and Pim-3) are oncogene-encoded serine/threonine kinases. Pim-2 is highly homologous to Pim-1 with similar oncogenic functions. Pim-2 overexpression promotes resistance to a host of apoptotic stimuli; its expression is negatively regulated by growth factor depletion. Increased levels of Pim-2 has also been observed in certain cancers.

Target: Serine/Threonine-Protein Kinase Pim-2 (PIM2)

Clonality: Polyclonal

Reactivity: Human

Tested Applications: ELISA, WB, IHC, IP

Host: Rabbit

Recommended dilutions: WB: 1/2000, IHC-P: 1/50 - 1/100, IP: 1/50 - 1/100. Not tested in IHC-F. Optimal dilutions/concentrations should be determined by the end user.

Datasheet

Version: 2.0.0

Revision date: 07 Aug 2025



Conjugation:	Unconjugated
Immunogen:	KLH-conjugated synthetic peptide between 277-308 amino acids from the C-terminal region of human PIM2.
Isotype:	IgG
Form:	Liquid
Purification:	Purified through a protein G column, eluted with high and low pH buffers and neutralized immediately, followed by dialysis against PBS.
Storage:	Aliquot and store at -20°C. Avoid repeated freeze/thaw cycles.
UniProt Primary AC:	Q9P1W9 (UniProt , ExPASy)
NCBI Accession:	NP_006866.2
String:	9606.ENSP00000365692
Molecular Weight:	Calculated MW: 34.2 kDa
Buffer:	PBS containing 0.09% sodium azide.
Note:	THIS PRODUCT IS FOR RESEARCH USE ONLY. NOT FOR USE IN DIAGNOSTIC, THERAPEUTIC OR COSMETIC PROCEDURES. NOT FOR HUMAN OR ANIMAL CONSUMPTION.