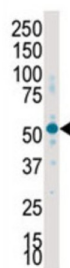
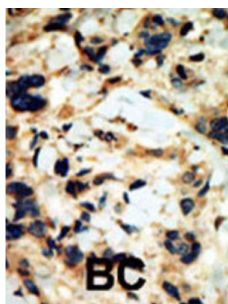


Serum/Glucocorticoid Regulated Kinase 2 (SGK2) Antibody

Catalogue No.: abx033782



SGK2, a Ser/Thr protein kinase, is similar to serum and glucocorticoid-induced protein kinase (SGK), but this gene product is not induced by serum or glucocorticoids. Expression is induced in response to signals that activate phosphatidylinositol 3-kinase, which is also true for SGK.

Target: Serum/Glucocorticoid Regulated Kinase 2 (SGK2)

Clonality: Polyclonal

Reactivity: Human

Tested Applications: ELISA, WB, IHC

Host: Rabbit

Recommended dilutions: WB: 1/1000, IHC-P: 1/50 - 1/100. Not tested in IHC-F. Optimal dilutions/concentrations should be determined by the end user.

Conjugation: Unconjugated

Immunogen: KLH-conjugated synthetic peptide between 395-426 amino acids from the C-terminal region of human SGK2.

Isotype: IgG

Form: Liquid

Datasheet

Version: 3.0.0

Revision date: 13 Aug 2025



Purification:	Purified through a protein G column, eluted with high and low pH buffers and neutralized immediately, followed by dialysis against PBS.
Storage:	Aliquot and store at -20°C. Avoid repeated freeze/thaw cycles.
UniProt Primary AC:	Q9HBY8 (UniProt , ExPASy)
String:	9606.ENSP00000340608
Molecular Weight:	Calculated MW: 41.2 kDa
Buffer:	PBS containing 0.09% sodium azide.
Note:	THIS PRODUCT IS FOR RESEARCH USE ONLY. NOT FOR USE IN DIAGNOSTIC, THERAPEUTIC OR COSMETIC PROCEDURES. NOT FOR HUMAN OR ANIMAL CONSUMPTION.

For Reference Only