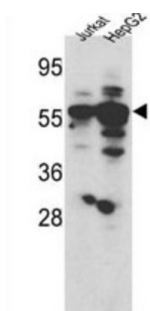
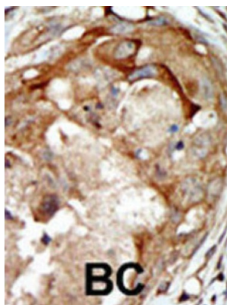


## Serum/Glucocorticoid Regulated Kinase 3 (SGK3) Antibody

Catalogue No.: abx033784



SGK3, a Ser/Thr protein kinase, is similar to serum and glucocorticoid-induced protein kinase (SGK), but this gene product is not induced by serum or glucocorticoids. Expression is induced in response to signals that activate phosphatidylinositol 3-kinase, which is also true for SGK.

<b>Target:</b>	Serum/Glucocorticoid Regulated Kinase 3 (SGK3)
<b>Clonality:</b>	Polyclonal
<b>Reactivity:</b>	Human
<b>Tested Applications:</b>	ELISA, WB, IHC
<b>Host:</b>	Rabbit
<b>Recommended dilutions:</b>	WB: 1/1000, IHC-P: 1/50 - 1/100. Not tested in IHC-F. Optimal dilutions/concentrations should be determined by the end user.
<b>Conjugation:</b>	Unconjugated
<b>Immunogen:</b>	KLH-conjugated synthetic peptide between 108-139 amino acids from the Central region of human SGK3.
<b>Isotype:</b>	IgG
<b>Form:</b>	Liquid

# Datasheet

Version: 4.0.0

Revision date: 14 Aug 2025



<b>Purification:</b>	Purified through a protein G column, eluted with high and low pH buffers and neutralized immediately, followed by dialysis against PBS.
<b>Storage:</b>	Aliquot and store at -20°C. Avoid repeated freeze/thaw cycles.
<b>UniProt Primary AC:</b>	Q96BR1 ( <a href="#">UniProt</a> , <a href="#">ExPASy</a> )
<b>NCBI Accession:</b>	NP_001028750.1, NP_001191102.1, NP_037389.4, NP_733827.2
<b>Molecular Weight:</b>	Calculated MW: 57.1 kDa
<b>Buffer:</b>	PBS containing 0.09% sodium azide.
<b>Note:</b>	THIS PRODUCT IS FOR RESEARCH USE ONLY. NOT FOR USE IN DIAGNOSTIC, THERAPEUTIC OR COSMETIC PROCEDURES. NOT FOR HUMAN OR ANIMAL CONSUMPTION.

For Reference Only