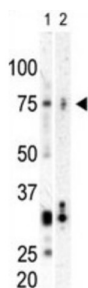


Serine/Threonine-Protein Kinase PLK3 (PLK3) Antibody

Catalogue No.: abx033840



CNK, a member of the CDC5/Polo subfamily of Ser/Thr protein kinases, is involved in regulating M phase functions during the cell cycle. It may also be part of the signaling network controlling cellular adhesion. In vitro, is able to phosphorylate CDC25C and casein. This membrane-associated protein binds to the calcium/integrin-binding protein (CIB). This interaction probably occurs via the POLO-box domain. Transcripts are highly detected in placenta, lung, followed by skeletal muscle, heart, pancreas, ovaries and kidney and weakly detected in liver and brain. This protein exhibits a short half-life. In cells of hematopoietic origin, CNK is strongly and exclusively detected in terminally differentiated macrophages. Transcript expression appears to be down-regulated in primary lung tumor. Cytokine and cellular adhesion trigger CNK induction. CNK is thought to be phosphorylated as cells enter mitosis and dephosphorylated as cells exit mitosis. The protein contains 2 POLO box domains.

Target:	Serine/Threonine-Protein Kinase PLK3 (PLK3)
Clonality:	Polyclonal
Reactivity:	Human, Mouse
Tested Applications:	ELISA, WB
Host:	Rabbit
Recommended dilutions:	WB: 1/1000. Optimal dilutions/concentrations should be determined by the end user.
Conjugation:	Unconjugated
Immunogen:	KLH-conjugated synthetic peptide between 615-646 amino acids from the C-terminal region of human PLK3.
Isotype:	IgG
Form:	Liquid
Purification:	Purified through a protein G column, eluted with high and low pH buffers and neutralized immediately, followed by dialysis against PBS.
Storage:	Aliquot and store at -20°C. Avoid repeated freeze/thaw cycles.

Datasheet

Version: 2.0.0

Revision date: 07 Aug 2025



UniProt Primary AC: Q9H4B4 ([UniProt](#), [ExPASy](#))

NCBI Accession: NP_004064.2

String: [9606.ENSP00000361275](#)

Molecular Weight: Calculated MW: 71.6 kDa

Buffer: PBS containing 0.09% sodium azide.

Specificity: Predicted to react with Rat PLK3.

Note: THIS PRODUCT IS FOR RESEARCH USE ONLY. NOT FOR USE IN DIAGNOSTIC, THERAPEUTIC OR COSMETIC PROCEDURES. NOT FOR HUMAN OR ANIMAL CONSUMPTION.

For Reference Only