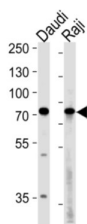
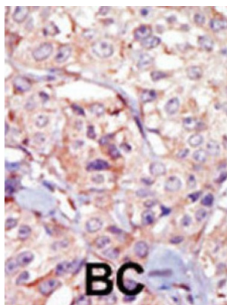


Haspin GSG2 Antibody

Catalogue No.: abx033846



Post-translational modifications of conserved N-terminal tail residues in histones regulate many aspects of chromosome activity. Mitotic phosphorylation of H3 Thr 3 occurs in prophase and dephosphorylation during anaphase. Haspin, a dual serine/threonine kinase, plays an important role in regulation of chromosome and spindle function during mitosis and meiosis via its function in phosphorylation of the threonine residue in the third position of histone 3 (Thr3).

Target: Haspin GSG2

Clonality: Polyclonal

Reactivity: Human

Tested Applications: ELISA, WB, IHC

Host: Rabbit

Recommended dilutions: WB: 1/1000, IHC-P: 1/50 - 1/100. Not tested in IHC-F. Optimal dilutions/concentrations should be determined by the end user.

Conjugation: Unconjugated

Immunogen: KLH-conjugated synthetic peptide between 323~352 amino acids from the central region of human haspin.

Isotype: IgG

Datasheet

Version: 5.0.0
Revision date: 11 Jun 2025



Form:	Liquid
Purification:	Purified through a protein G column, eluted with high and low pH buffers and neutralized immediately, followed by dialysis against PBS.
Storage:	Aliquot and store at -20°C. Avoid repeated freeze/thaw cycles.
UniProt Primary AC:	Q8TF76 (UniProt , ExPASy)
NCBI Accession:	NP_114171.2
KEGG:	hsa:83903
String:	9606.ENSP00000325290
Molecular Weight:	Calculated MW: 88.5 kDa
Buffer:	PBS containing 0.09% sodium azide.
Note:	THIS PRODUCT IS FOR RESEARCH USE ONLY. NOT FOR USE IN DIAGNOSTIC, THERAPEUTIC OR COSMETIC PROCEDURES. NOT FOR HUMAN OR ANIMAL CONSUMPTION.

For Reference Only