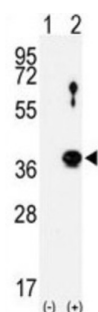


Serine/threonine-Protein Kinase Nek6 (NEK6) Antibody

Catalogue No.: abx033855



NEK6 is a serine/threonine kinase that controls initiation of mitosis. NEK6 is activated during M phase. It is required for chromosome segregation at metaphase-anaphase transition and therefore for mitotic progression. Inhibition of activity results in apoptosis.

Target: Serine/threonine-Protein Kinase Nek6 (NEK6)

Clonality: Polyclonal

Reactivity: Human, Mouse

Tested Applications: ELISA, WB

Host: Rabbit

Recommended dilutions: WB: 1/1000. Optimal dilutions/concentrations should be determined by the end user.

Conjugation: Unconjugated

Immunogen: KLH-conjugated synthetic peptide between 8-39 amino acids from the N-terminal region of human NEK6.

Isotype: IgG

Form: Liquid

Purification: Purified through a protein G column, eluted with high and low pH buffers and neutralized immediately, followed by dialysis against PBS.

Storage: Aliquot and store at -20°C. Avoid repeated freeze/thaw cycles.

UniProt Primary AC: Q9HC98 ([UniProt](#), [ExPASy](#))

NCBI Accession: NP_001138473.1, NP_001159639.1, NP_001159640.1, NP_001159641.1, NP_001159642.1, NP_001159643.1, NP_055212.2

Datasheet

Version: 4.0.0

Revision date: 12 Aug 2025



String: [9606.ENSF00000362702](#)

Molecular Weight: Calculated MW: 35.7 kDa

Buffer: PBS containing 0.09% sodium azide.

Note: THIS PRODUCT IS FOR RESEARCH USE ONLY. NOT FOR USE IN DIAGNOSTIC, THERAPEUTIC OR COSMETIC PROCEDURES. NOT FOR HUMAN OR ANIMAL CONSUMPTION.

For Reference Only