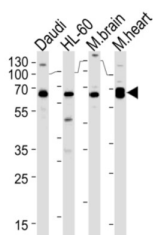
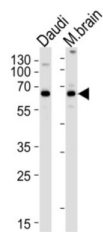
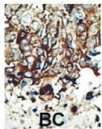
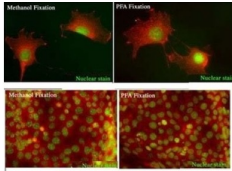


Protein Kinase C And Casein Kinase Substrate In Neurons Protein 2 (PACSIN2) Antibody

Catalogue No.: abx033865



PACSIN may play a role in vesicle formation and transport. This protein homo and hetero-aggregates with other PACSINs. It also binds dynamin 1, synaptojanin, synapsin 1 and the neural Wiskott-Aldrich syndrome protein (N-WASP). The protein exhibits a cvesicle-like cytoplasmic distribution and is ubiquitously expressed. PACSIN is phosphorylated by casein kinase 2 (CK2) and protein kinase C (PKC). The protein contains 1 FCH domain and 1 SH3 domain.

Target: Protein Kinase C And Casein Kinase Substrate In Neurons Protein 2 (PACSIN2)

Clonality: Polyclonal

Reactivity: Human, Mouse

Tested Applications: ELISA, WB, IHC

Host: Rabbit

Datasheet

Version: 3.0.0
Revision date: 22 May 2025



Recommended dilutions: WB: 1/1000, IHC-P: 1/50 - 1/100. Not tested in IHC-F. Optimal dilutions/concentrations should be determined by the end user.

Conjugation: Unconjugated

Immunogen: KLH-conjugated synthetic peptide between 342-371 amino acids from the C-terminal region of human PACSIN2.

Isotype: IgG

Form: Liquid

Purification: Purified through a protein G column, eluted with high and low pH buffers and neutralized immediately, followed by dialysis against PBS.

Storage: Aliquot and store at -20°C. Avoid repeated freeze/thaw cycles.

UniProt Primary AC: Q9UNF0 ([UniProt](#), [ExPASy](#))

NCBI Accession: NP_001171899.1, NP_001171900.1, NP_009160.2

String: [9606.ENSP00000263246](#)

Molecular Weight: Calculated MW: 55.7 kDa

Buffer: PBS containing 0.09% sodium azide.

Note: THIS PRODUCT IS FOR RESEARCH USE ONLY. NOT FOR USE IN DIAGNOSTIC, THERAPEUTIC OR COSMETIC PROCEDURES. NOT FOR HUMAN OR ANIMAL CONSUMPTION.