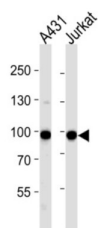
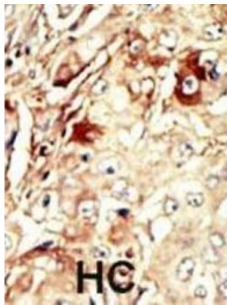


Wee1-Like Protein Kinase (WEE1) Antibody

Catalogue No.: abx033878



WEE1 is a nuclear protein, which is a tyrosine kinase belonging to the Ser/Thr family of protein kinases. This protein catalyzes the inhibitory tyrosine phosphorylation of CDC2/cyclin B kinase, and appears to coordinate the transition between DNA replication and mitosis by protecting the nucleus from cytoplasmically activated CDC2 kinase.

Target: Wee1-Like Protein Kinase (WEE1)

Clonality: Polyclonal

Reactivity: Human

Tested Applications: ELISA, WB, IHC

Host: Rabbit

Recommended dilutions: WB: 1/1000, IHC-P: 1/50 - 1/100. Not tested in IHC-F. Optimal dilutions/concentrations should be determined by the end user.

Conjugation: Unconjugated

Immunogen: KLH-conjugated synthetic peptide between 144-173 amino acids from the Central region of human WEE1.

Isotype: IgG

Form: Liquid

Datasheet

Version: 3.0.0
Revision date: 08 Sep 2025



| | |
|----------------------------|--|
| Purification: | Purified through a protein G column, eluted with high and low pH buffers and neutralized immediately, followed by dialysis against PBS. |
| Storage: | Aliquot and store at -20°C. Avoid repeated freeze/thaw cycles. |
| UniProt Primary AC: | P30291 (UniProt , ExPASy) |
| Gene Symbol: | WEE1 |
| GeneID: | 7465 |
| OMIM: | 193525 |
| NCBI Accession: | NP_001137448.1, NP_003381.1 |
| HGNC: | 12761 |
| KEGG: | hsa:7465 |
| Ensembl: | ENSG00000166483 |
| String: | 9606.ENSP00000402084 |
| Molecular Weight: | Calculated MW: 71.6 kDa |
| Buffer: | PBS containing 0.09% sodium azide. |
| Note: | THIS PRODUCT IS FOR RESEARCH USE ONLY. NOT FOR USE IN DIAGNOSTIC, THERAPEUTIC OR COSMETIC PROCEDURES. NOT FOR HUMAN OR ANIMAL CONSUMPTION. |