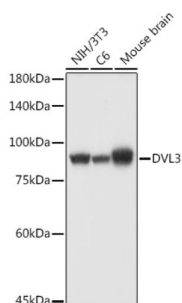
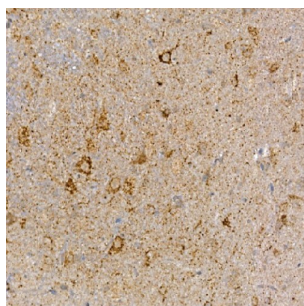


## Segment Polarity Protein Dishevelled Homolog DVL-3 (DVL3) Antibody

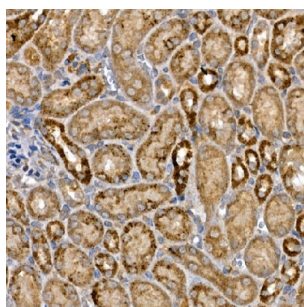
Catalogue No.: abx002791



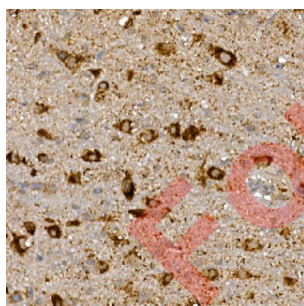
Western blot analysis of extracts of various cell lines using DVL3 Antibody (1/1000 dilution).



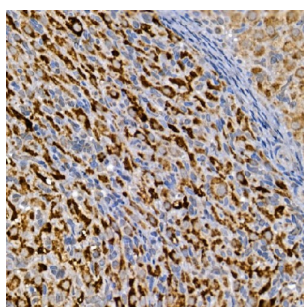
Immunohistochemistry of paraffin-embedded mouse brain using DVL3 Antibody (1/100 dilution, 40x lens). High pressure antigen retrieval was performed in 10 mM citrate buffer pH 6.0 before commencing with IHC staining protocol.



Immunohistochemistry of paraffin-embedded mouse kidney using DVL3 Antibody (1/100 dilution, 40x lens). High pressure antigen retrieval was performed in 10 mM citrate buffer pH 6.0 before commencing with IHC staining protocol.



Immunohistochemistry of paraffin-embedded rat brain using DVL3 Antibody (1/100 dilution, 40x lens). High pressure antigen retrieval was performed in 10 mM citrate buffer pH 6.0 before commencing with IHC staining protocol.



Immunohistochemistry of paraffin-embedded rat ovary using DVL3 Antibody (1/100 dilution, 40x lens). High pressure antigen retrieval was performed in 10 mM citrate buffer pH 6.0 before commencing with IHC staining protocol.

# Datasheet

Version: 3.0.0  
Revision date: 07 Aug 2025



DVL3 Antibody is a Rabbit Polyclonal antibody against DVL3. This gene is a member of a multi-gene family which shares strong similarity with the Drosophila dishevelled gene, dsh. The Drosophila dishevelled gene encodes a cytoplasmic phosphoprotein that regulates cell proliferation.

<b>Target:</b>	Segment Polarity Protein Dishevelled Homolog DVL-3 (DVL3)
<b>Clonality:</b>	Polyclonal
<b>Reactivity:</b>	Human, Mouse, Rat
<b>Tested Applications:</b>	WB, IHC
<b>Host:</b>	Rabbit
<b>Recommended dilutions:</b>	WB: 1/500 - 1/1000, IHC-P: 1/50 - 1/100. Not tested in IHC-F. Optimal dilutions/concentrations should be determined by the end user.
<b>Conjugation:</b>	Unconjugated
<b>Immunogen:</b>	Recombinant fusion protein corresponding to human DVL3
<b>Isotype:</b>	IgG
<b>Form:</b>	Liquid
<b>Purification:</b>	Purified by affinity chromatography.
<b>Storage:</b>	Aliquot and store at -20°C. Avoid repeated freeze/thaw cycles.
<b>UniProt Primary AC:</b>	Q92997 ( <a href="#">UniProt</a> , <a href="#">ExPASy</a> )
<b>Gene Symbol:</b>	DVL3
<b>GeneID:</b>	<a href="#">1857</a>
<b>NCBI Accession:</b>	NP_004414.3
<b>KEGG:</b>	hsa:1857
<b>String:</b>	<a href="#">9606.ENSP00000316054</a>
<b>Molecular Weight:</b>	Calculated MW: 76 kDa/78 kDa Observed MW: 93 kDa
<b>Buffer:</b>	PBS, pH 7.3, containing 0.05% Proclin-300, 50% glycerol.

# Datasheet

Version: 3.0.0

Revision date: 07 Aug 2025



**Concentration:** 1 mg/ml

**Note:** THIS PRODUCT IS FOR RESEARCH USE ONLY. NOT FOR USE IN DIAGNOSTIC, THERAPEUTIC OR COSMETIC PROCEDURES. NOT FOR HUMAN OR ANIMAL CONSUMPTION.

For Reference Only