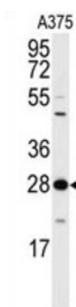
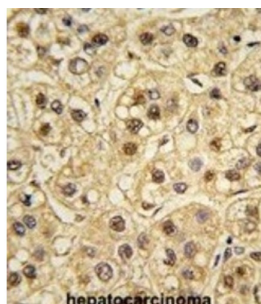


14-3-3 Protein Zeta/Delta (YWHAZ) Antibody

Catalogue No.: abx033913



14-3-3 protein zeta/delta belongs to the 14-3-3 family of proteins which mediate signal transduction by binding to phosphoserine-containing proteins. This protein interacts with IRS1 protein, suggesting a role in regulating insulin sensitivity. This highly conserved protein family is found in both plants and mammals, and this protein is 99% identical to the mouse, rat and sheep orthologs.

Target: 14-3-3 Protein Zeta/Delta (YWHAZ)

Clonality: Polyclonal

Reactivity: Human

Tested Applications: ELISA, WB, IHC

Host: Rabbit

Recommended dilutions: WB: 1/1000, IHC-P: 1/10 - 1/50. Not tested in IHC-F. Optimal dilutions/concentrations should be determined by the end user.

Conjugation: Unconjugated

Immunogen: KLH-conjugated synthetic peptide between 211-239 amino acids from human YWHAZ.

Isotype: IgG

Form: Liquid

Datasheet

Version: 2.0.0
Revision date: 09 Oct 2025



Purification:	Purified through a protein A column, followed by peptide affinity purification.
Storage:	Aliquot and store at -20°C. Avoid repeated freeze/thaw cycles.
UniProt Primary AC:	P63104 (UniProt , ExPASy)
KEGG:	hsa:7534
String:	9606.ENSP00000379287
Molecular Weight:	Calculated MW: 27.7 kDa
Buffer:	PBS containing 0.09% sodium azide.
Specificity:	Predicted to react with Mouse, Rat, Cow, Chicken and Sheep YWHAZ.
Note:	THIS PRODUCT IS FOR RESEARCH USE ONLY. NOT FOR USE IN DIAGNOSTIC, THERAPEUTIC OR COSMETIC PROCEDURES. NOT FOR HUMAN OR ANIMAL CONSUMPTION.

For Reference Only