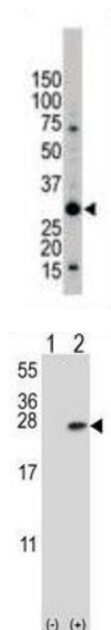
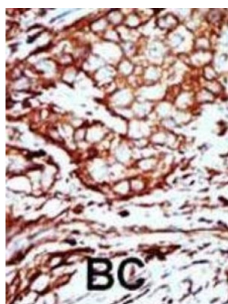


## 14-3-3 Protein Beta/Alpha (YWHAB) Antibody

Catalogue No.: abx033918



YWHAB belongs to the 14-3-3 family of proteins, members of which mediate signal transduction by binding to phosphoserine-containing proteins. This highly conserved protein family is found in both plants and mammals. The encoded protein has been shown to interact with RAF1 and CDC25 phosphatases, suggesting that it may play a role in linking mitogenic signaling and the cell cycle machinery. Two transcript variants differing in the 5' UTR, but encoding the same protein, have been identified for the gene. Both variants encode the same protein, however, they are differentially expressed in hematopoietic cells.

**Target:** 14-3-3 Protein Beta/Alpha (YWHAB)

**Clonality:** Polyclonal

**Reactivity:** Human

**Tested Applications:** ELISA, WB, IHC, IF/ICC

**Host:** Rabbit

# Datasheet

Version: 2.0.0  
Revision date: 06 Oct 2025



**Recommended dilutions:** WB: 1/1000, IHC-P: 1/50 - 1/100, IF/ICC: 1/10 - 1/50. Not tested in IHC-F. Optimal dilutions/concentrations should be determined by the end user.

**Conjugation:** Unconjugated

**Immunogen:** KLH-conjugated synthetic peptide between 217-246 amino acids from the C-terminal region of human YWHAB.

**Isotype:** IgG

**Form:** Liquid

**Purification:** Purified through a protein G column, eluted with high and low pH buffers and neutralized immediately, followed by dialysis against PBS.

**Storage:** Aliquot and store at -20°C. Avoid repeated freeze/thaw cycles.

**UniProt Primary AC:** P31946 ([UniProt](#), [ExPASy](#))

**KEGG:** hsa:7529

**String:** [9606.ENSP00000361930](#)

**Molecular Weight:** Calculated MW: 28.1 kDa

**Buffer:** PBS containing 0.09% sodium azide.

**Specificity:** Predicted to react with Mouse, Rat, Cow, Chicken, Monkey and Zebrafish YWHAB.

**Note:** THIS PRODUCT IS FOR RESEARCH USE ONLY. NOT FOR USE IN DIAGNOSTIC, THERAPEUTIC OR COSMETIC PROCEDURES. NOT FOR HUMAN OR ANIMAL CONSUMPTION.