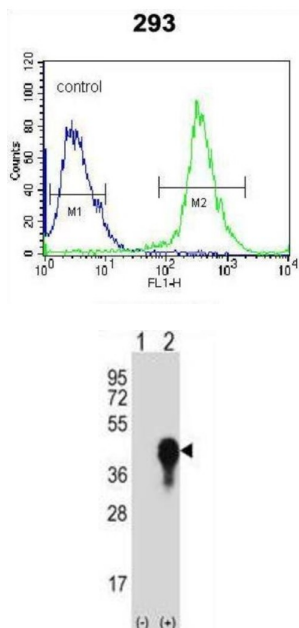


Dual Specificity Protein Phosphatase 6 (DUSP6) Antibody

Catalogue No.: abx033957



Dual Specificity Protein Phosphatase 6 (DUSP6) Antibody is a Rabbit Polyclonal antibody for the detection of DUSP6. Dual specificity protein tyrosine phosphatases (dsPTPs) are a subfamily of protein tyrosine phosphatases implicated in the regulation of mitogen-activated protein kinase (MAPK). MKP-1 (also known as CL100, 3CH134, Erp, and hVH-1) exemplifies a class of dual-specificity phosphatase able to reverse the activation of MAP kinases by dephosphorylating critical tyrosine and threonine residues. MKP-3 is 36% identical to MKP-1 and it blocks both the phosphorylation and enzymatic activation of ERK2 by mitogens. MKP-3 mRNA is expressed in lung, heart, brain, and kidney, but not significantly in skeletal muscle or testis.

Target: Dual Specificity Protein Phosphatase 6 (DUSP6)

Clonality: Polyclonal

Reactivity: Rat

Tested Applications: ELISA, WB, FCM

Host: Rabbit

Recommended dilutions: WB: 1/1000, FCM: 1/10 - 1/50. Optimal dilutions/concentrations should be determined by the end user.

Conjugation: Unconjugated

Immunogen: 6x HIS-tagged recombinant protein encoding 1-381 AA of rat MKP3.

Isotype: IgG

Datasheet

Version: 3.0.0
Revision date: 23 Jun 2025



Form:	Liquid
Purification:	Purified through a protein G column, eluted with high and low pH buffers and neutralized immediately, followed by dialysis against PBS.
Storage:	Aliquot and store at -20°C. Avoid repeated freeze/thaw cycles.
UniProt Primary AC:	Q64346 (UniProt , ExPASy)
NCBI Accession:	NP_446335.1
KEGG:	rno:116663
String:	10116.ENSRNOP00000032969
Molecular Weight:	Calculated MW: 42.3 kDa
Buffer:	PBS containing 0.09% sodium azide.
Note:	THIS PRODUCT IS FOR RESEARCH USE ONLY. NOT FOR USE IN DIAGNOSTIC, THERAPEUTIC OR COSMETIC PROCEDURES. NOT FOR HUMAN OR ANIMAL CONSUMPTION.

For Reference Only