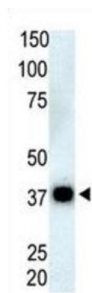
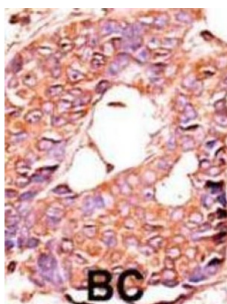


Protein Phosphatase 6 Catalytic Subunit (PPP6C) Antibody

Catalogue No.: abx033967



PPP6C belongs to the PPP phosphatase family, PP-V subfamily. Reversible phosphorylation of proteins on serine and threonine residues is an important biochemical event that regulates a broad variety of intracellular processes. The phosphorylation state is determined by the well-controlled balance of activities of serine/threonine-specific protein kinases and protein phosphatases, including PPP6C. Expression levels are highest in testis, heart, and skeletal muscle and lowest in placenta, lung, and kidney. PPP6C can complement mutations in the *S. cerevisiae* Sit4 and *S. pombe* ppe1 genes, indicating that PPP6C is the functional homolog of yeast Sit4p and ppe1. Since Sit4p is required for the G1 to S transition of the cell cycle and ppe1 is involved in cell shape control and mitotic division, it has been suggested that PPP6C functions in cell cycle regulation.

Target: Protein Phosphatase 6 Catalytic Subunit (PPP6C)

Clonality: Polyclonal

Reactivity: Human

Tested Applications: ELISA, WB, IHC

Host: Rabbit

Recommended dilutions: WB: 1/1000, IHC-P: 1/50 - 1/100. Not tested in IHC-F. Optimal dilutions/concentrations should be determined by the end user.

Conjugation: Unconjugated

Immunogen: KLH-conjugated synthetic peptide between 1-30 amino acids from the N-terminal region of human PPP6C.

Datasheet

Version: 2.0.0

Revision date: 04 Oct 2025



Isotype:	IgG
Form:	Liquid
Purification:	Purified through a protein G column, eluted with high and low pH buffers and neutralized immediately, followed by dialysis against PBS.
Storage:	Aliquot and store at -20°C. Avoid repeated freeze/thaw cycles.
UniProt Primary AC:	O00743 (UniProt , ExPASy)
KEGG:	hsa:5537
Molecular Weight:	Calculated MW: 35.1 kDa
Buffer:	PBS containing 0.09% sodium azide.
Note:	THIS PRODUCT IS FOR RESEARCH USE ONLY. NOT FOR USE IN DIAGNOSTIC, THERAPEUTIC OR COSMETIC PROCEDURES. NOT FOR HUMAN OR ANIMAL CONSUMPTION.

For Reference Only