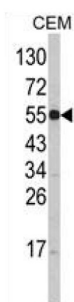
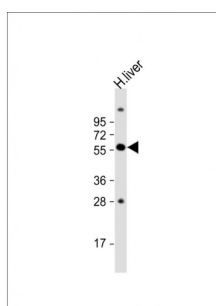
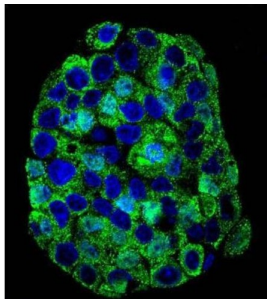


Natural Resistance-Associated Macrophage Protein 1 (SLC11A1) Antibody

Catalogue No.: abx033976



NRAMP1, also known as SLC11A1, is a member of the solute carrier family 11 (proton-coupled divalent metal ion transporters) family and encodes a multi-pass membrane protein. The protein functions as a divalent transition metal (iron and manganese) transporter involved in iron metabolism and host resistance to certain pathogens. Mutations in this gene have been associated with susceptibility to infectious diseases such as leprosy and tuberculosis, and inflammatory diseases such as Crohn disease and rheumatoid arthritis. Alternatively spliced variants that encode different protein isoforms have been described but the full-length nature of only one has been determined.

Target: Natural Resistance-Associated Macrophage Protein 1 (SLC11A1)

Clonality: Polyclonal

Reactivity: Human

Tested Applications: ELISA, WB

Datasheet

Version: 3.0.0
Revision date: 09 Sep 2025



Host: Rabbit

Recommended dilutions: WB: 1/1000. Optimal dilutions/concentrations should be determined by the end user.

Conjugation: Unconjugated

Immunogen: KLH-conjugated synthetic peptide between 250-276 amino acids from the Central region of human SLC11A1.

Isotype: IgG

Form: Liquid

Purification: Purified through a protein A column, followed by peptide affinity purification.

Storage: Aliquot and store at -20°C. Avoid repeated freeze/thaw cycles.

UniProt Primary AC: P49279 ([UniProt](#), [ExPASy](#))

Gene Symbol: SLC11A1

GeneID: [6556](#)

HGNC: 10907

KEGG: hsa:6556

String: [9606.ENSP00000233202](#)

Molecular Weight: Calculated MW: 59.9 kDa

Buffer: PBS containing 0.09% sodium azide.

Note: THIS PRODUCT IS FOR RESEARCH USE ONLY. NOT FOR USE IN DIAGNOSTIC, THERAPEUTIC OR COSMETIC PROCEDURES. NOT FOR HUMAN OR ANIMAL CONSUMPTION.