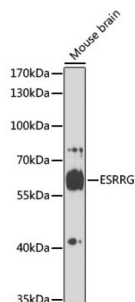


Estrogen-Related Receptor Gamma (ESRRG) Antibody

Catalogue No.: abx002800



Western blot analysis of extracts of mouse brain using ESRRG Antibody (1/1000 dilution).

ESRRG Antibody is a Rabbit Polyclonal antibody against ESRRG. This gene encodes a member of the estrogen receptor-related receptor (ESRR) family, which belongs to the nuclear hormone receptor superfamily. All members of the ESRR family share an almost identical DNA binding domain, which is composed of two C4-type zinc finger motifs. The ESRR members are orphan nuclear receptors; they bind to the estrogen response element and steroidogenic factor 1 response element, and activate genes controlled by both response elements in the absence of any ligands. The ESRR family is closely related to the estrogen receptor (ER) family. They share target genes, co-regulators and promoters, and by targeting the same set of genes, the ESRRs seem to interfere with the ER-mediated estrogen response in various ways. It has been reported that the family member encoded by this gene functions as a transcriptional activator of DNA cytosine-5-methyltransferases 1 (Dnmt1) expression by direct binding to its response elements in the DNMT1 promoters, modulates cell proliferation and estrogen signaling in breast cancer, and negatively regulates bone morphogenetic protein 2-induced osteoblast differentiation and bone formation. Multiple alternatively spliced transcript variants have been identified, which mainly differ at the 5' end and some of which encode protein isoforms differing in the N-terminal region.

Target: Estrogen-Related Receptor Gamma (ESRRG)

Clonality: Polyclonal

Reactivity: Mouse, Rat

Tested Applications: WB

Host: Rabbit

Recommended dilutions: WB: 1/500 - 1/2000. Optimal dilutions/concentrations should be determined by the end user.

Conjugation: Unconjugated

Immunogen: A synthetic peptide corresponding to human ESRRG

Isotype: IgG

Form: Liquid

Purification: Purified by affinity chromatography.

Datasheet

Version: 4.0.0
Revision date: 16 Jun 2025



Storage: Aliquot and store at -20°C. Avoid repeated freeze/thaw cycles.

UniProt Primary AC: P62508 ([UniProt](#), [ExPASy](#))

Gene Symbol: ESRRG

GeneID: [2104](#)

NCBI Accession: NP_001429.2

KEGG: hsa:2104

String: [9606.ENSP00000355904](#)

Molecular Weight: Calculated MW: 44 kDa/48 kDa/49 kDa/51 kDa/52 kDa
Observed MW: 60 kDa

Buffer: PBS, pH 7.3, containing 0.01% thiomersal, 50% glycerol.

Concentration: 1 mg/ml

Note: THIS PRODUCT IS FOR RESEARCH USE ONLY. NOT FOR USE IN DIAGNOSTIC, THERAPEUTIC OR COSMETIC PROCEDURES. NOT FOR HUMAN OR ANIMAL CONSUMPTION.