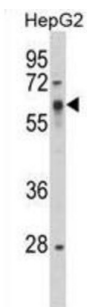
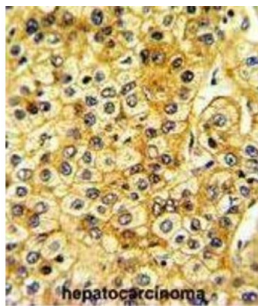
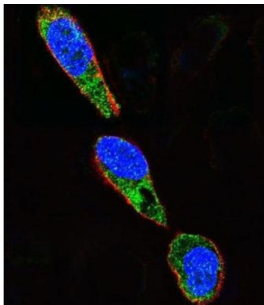


SRC Proto-Oncogene, Non-Receptor Tyrosine Kinase (SRC) Antibody

Catalogue No.: abx034016



SRC is a tyrosine-protein kinase whose activity can be inhibited by phosphorylation by c-SRC kinase.

Target: SRC Proto-Oncogene, Non-Receptor Tyrosine Kinase (SRC)

Clonality: Polyclonal

Reactivity: Human

Tested Applications: ELISA, WB, IHC, IF/ICC

Host: Rabbit

Recommended dilutions: WB: 1/1000, IHC-P: 1/50 - 1/100, IF/ICC: 1/10 - 1/50. Not tested in IHC-F. Optimal dilutions/concentrations should be determined by the end user.

Conjugation: Unconjugated

Datasheet

Version: 2.0.0
Revision date: 14 Sep 2025



Immunogen:	KLH-conjugated synthetic peptide between 397-424 amino acids from human SRC.
Isotype:	IgG
Form:	Liquid
Purification:	Purified through a protein A column, followed by peptide affinity purification.
Storage:	Aliquot and store at -20°C. Avoid repeated freeze/thaw cycles.
UniProt Primary AC:	P12931 (UniProt , ExPASy)
Molecular Weight:	Calculated MW: 59.8 kDa
Buffer:	PBS containing 0.09% sodium azide.
Specificity:	Predicted to react with Mouse, Rat, Cow, Pig, Zebrafish and Xenopus SRC.
Note:	THIS PRODUCT IS FOR RESEARCH USE ONLY. NOT FOR USE IN DIAGNOSTIC, THERAPEUTIC OR COSMETIC PROCEDURES. NOT FOR HUMAN OR ANIMAL CONSUMPTION.