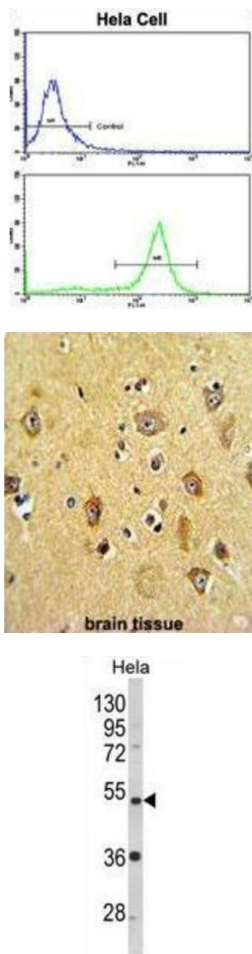


Protein Phosphatase 2 Regulatory Subunit Bbeta (PPP2R2B) Antibody

Catalogue No.: abx034018



PPP2R2B belongs to the phosphatase 2 regulatory subunit B family. Protein phosphatase 2 is one of the four major Ser/Thr phosphatases, and it is implicated in the negative control of cell growth and division. It consists of a common heteromeric core enzyme, which is composed of a catalytic subunit and a constant regulatory subunit, that associates with a variety of regulatory subunits. The B regulatory subunit might modulate substrate selectivity and catalytic activity. This protein is a beta isoform of the regulatory subunit B55 subfamily.

Target:	Protein Phosphatase 2 Regulatory Subunit Bbeta (PPP2R2B)
Clonality:	Polyclonal
Reactivity:	Human
Tested Applications:	ELISA, WB, IHC, FCM
Host:	Rabbit

Datasheet

Version: 3.0.0
Revision date: 18 Jul 2025



Recommended dilutions: WB: 1/1000, IHC-P: 1/50 - 1/100, FCM: 1/10 - 1/50. Not tested in IHC-F. Optimal dilutions/concentrations should be determined by the end user.

Conjugation: Unconjugated

Immunogen: KLH-conjugated synthetic peptide between 104-130 amino acids from the Central region of human PPP2R2B.

Isotype: IgG

Form: Liquid

Purification: Purified through a protein A column, followed by peptide affinity purification.

Storage: Aliquot and store at -20°C. Avoid repeated freeze/thaw cycles.

UniProt Primary AC: Q00005 ([UniProt](#), [ExPASy](#))

KEGG: hsa:5521

String: [9606.ENSP00000377936](#)

Molecular Weight: Calculated MW: 51.7 kDa

Buffer: PBS containing 0.09% sodium azide.

Specificity: Predicted to react with Mouse, Rat, Cow, Pig, Monkey and Xenopus PPP2R2B.

Note: THIS PRODUCT IS FOR RESEARCH USE ONLY. NOT FOR USE IN DIAGNOSTIC, THERAPEUTIC OR COSMETIC PROCEDURES. NOT FOR HUMAN OR ANIMAL CONSUMPTION.