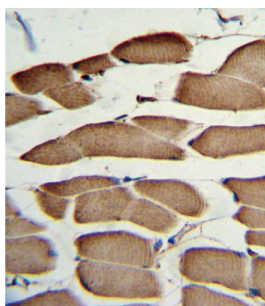


Protein Wnt-5b (WNT5B) Antibody

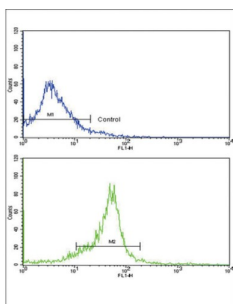
Catalogue No.: abx034020



WB analysis of Mouse bladder tissue lysates (35 µg/lane), using Protein Wnt-5b (WNT5B) Antibody.



IHC-P analysis of Human skeletal muscle tissue, using Protein Wnt-5b (WNT5B) Antibody.



FCM analysis of wdr cells, using Protein Wnt-5b (WNT5B) Antibody (bottom histogram) compared to a negative control cell (top histogram). FITC-conjugated goat-anti-rabbit secondary antibodies were used for the analysis.

WNT5B is a protein which shows 94% and 80% amino acid identity to the mouse Wnt5b protein and the human WNT5A protein, respectively.

Target: Protein Wnt-5b (WNT5B)

Clonality: Polyclonal

Reactivity: Human, Mouse

Tested Applications: ELISA, WB, IHC, FCM

Host: Rabbit

Recommended dilutions: WB: 1/1000, IHC-P: 1/10 - 1/50, FCM: 1/10 - 1/50. Not tested in IHC-F. Optimal dilutions/concentrations should be determined by the end user.

Datasheet

Version: 4.0.0
Revision date: 12 Mar 2025



Conjugation:	Unconjugated
Immunogen:	KLH-conjugated synthetic peptide between 153-182 amino acids from the Central region of human WNT5B.
Isotype:	IgG
Form:	Liquid
Purification:	Purified through a protein A column, followed by peptide affinity purification.
Storage:	Aliquot and store at -20°C. Avoid repeated freeze/thaw cycles.
UniProt Primary AC:	Q9H1J7 (UniProt , ExPASy)
Gene Symbol:	WNT5B
GeneID:	81029
String:	9606.ENSP00000380379
Molecular Weight:	Calculated MW: 40.3 kDa
Buffer:	PBS containing 0.09% sodium azide.
Specificity:	Predicted to react with Rat, Rabbit and Xenopus WNT5B.
Concentration:	0.5 mg/ml
Note:	THIS PRODUCT IS FOR RESEARCH USE ONLY. NOT FOR USE IN DIAGNOSTIC, THERAPEUTIC OR COSMETIC PROCEDURES. NOT FOR HUMAN OR ANIMAL CONSUMPTION.