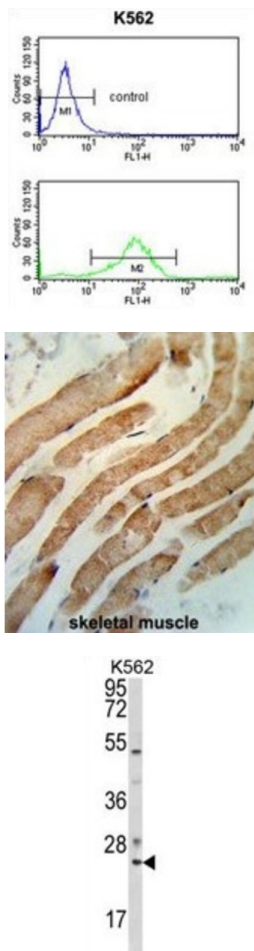


## Ras-Related Protein Rab-7a (RAB7) Antibody

Catalogue No.: abx034052



RAB family members are small, RAS-related GTP-binding proteins that are important regulators of vesicular transport. Each RAB protein targets multiple proteins that act in exocytic / endocytic pathways. RAB7 is a RAB family member that regulates vesicle traffic in the late endosomes and also from late endosomes to lysosomes. This protein is also involved in the cellular vacuolation of the VacA cytotoxin of *Helicobacter pylori*.

**Target:** Ras-Related Protein Rab-7a (RAB7)

**Clonality:** Polyclonal

**Reactivity:** Human, Mouse, Rat

**Tested Applications:** ELISA, WB, IHC, FCM

**Host:** Rabbit

**Recommended dilutions:** WB: 1/2000, IHC-P: 1/25, FCM: 1/25. Not tested in IHC-F. Optimal dilutions/concentrations should be determined by the end user.

# Datasheet

Version: 2.0.0  
Revision date: 20 Aug 2025



<b>Conjugation:</b>	Unconjugated
<b>Immunogen:</b>	KLH-conjugated synthetic peptide between 176-204 amino acids from the C-terminal region of human RAB7.
<b>Isotype:</b>	IgG
<b>Form:</b>	Liquid
<b>Purification:</b>	Purified through a protein A column, followed by peptide affinity purification.
<b>Storage:</b>	Aliquot and store at -20°C. Avoid repeated freeze/thaw cycles.
<b>UniProt Primary AC:</b>	P51149 ( <a href="#">UniProt</a> , <a href="#">ExPASy</a> )
<b>KEGG:</b>	hsa:7879
<b>String:</b>	<a href="#">9606.ENSP00000265062</a>
<b>Molecular Weight:</b>	Calculated MW: 23.5 kDa
<b>Buffer:</b>	PBS containing 0.09% sodium azide.
<b>Specificity:</b>	Predicted to react with Mouse RAB7A.
<b>Note:</b>	THIS PRODUCT IS FOR RESEARCH USE ONLY. NOT FOR USE IN DIAGNOSTIC, THERAPEUTIC OR COSMETIC PROCEDURES. NOT FOR HUMAN OR ANIMAL CONSUMPTION.