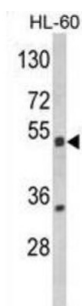
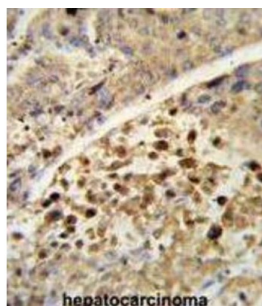
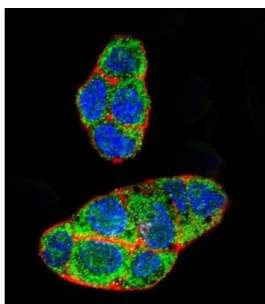


Nuclear Receptor Subfamily 1 Group I Member 2 (NR1I2) Antibody

Catalogue No.: abx034057



NR1I2 belongs to the nuclear receptor superfamily, members of which are transcription factors characterized by a ligand-binding domain and a DNA-binding domain. This protein is a transcriptional regulator of the cytochrome P450 gene CYP3A4, binding to the response element of the CYP3A4 promoter as a heterodimer with the 9-cis retinoic acid receptor RXR. It is activated by a range of compounds that induce CYP3A4, including dexamethasone and rifampicin.

Target: Nuclear Receptor Subfamily 1 Group I Member 2 (NR1I2)

Clonality: Polyclonal

Reactivity: Human

Tested Applications: ELISA, WB, IHC, IF/ICC, FCM

Host: Rabbit

Recommended dilutions: WB: 1/1000, IHC-P: 1/50 - 1/100, IF/ICC: 1/10 - 1/50, FCM: 1/10 - 1/50. Not tested in IHC-F.
Optimal dilutions/concentrations should be determined by the end user.

Datasheet

Version: 4.0.0
Revision date: 24 Jun 2025



Conjugation:	Unconjugated
Immunogen:	KLH-conjugated synthetic peptide between 100-127 amino acids from the Central region of human NR1I2.
Isotype:	IgG
Form:	Liquid
Purification:	Purified through a protein A column, followed by peptide affinity purification.
Storage:	Aliquot and store at -20°C. Avoid repeated freeze/thaw cycles.
UniProt Primary AC:	O75469 (UniProt , ExPASy)
Gene Symbol:	NR1I2
KEGG:	hsa:8856
String:	9606.ENSP00000336528
Molecular Weight:	Calculated MW: 49.8 kDa
Buffer:	PBS containing 0.09% sodium azide.
Note:	THIS PRODUCT IS FOR RESEARCH USE ONLY. NOT FOR USE IN DIAGNOSTIC, THERAPEUTIC OR COSMETIC PROCEDURES. NOT FOR HUMAN OR ANIMAL CONSUMPTION.