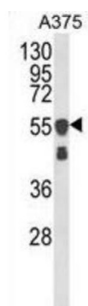
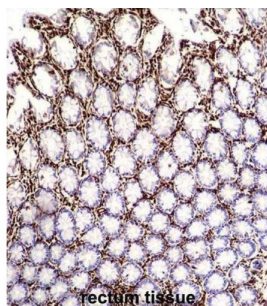
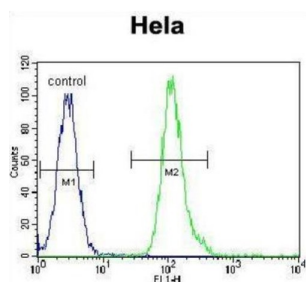


## Vimentin (VIME) Antibody

Catalogue No.: abx034067



VIME is a member of the intermediate filament family. Intermediate filaments, along with microtubules and actin microfilaments, make up the cytoskeleton. This protein is responsible for maintaining cell shape, integrity of the cytoplasm, and stabilizing cytoskeletal interactions. It is also involved in the immune response, and controls the transport of low-density lipoprotein (LDL) derived cholesterol from a lysosome to the site of esterification. It functions as an organizer of a number of critical proteins involved in attachment, migration, and cell signaling.

<b>Target:</b>	Vimentin (VIME)
<b>Clonality:</b>	Polyclonal
<b>Reactivity:</b>	Human
<b>Tested Applications:</b>	ELISA, WB, IHC, FCM
<b>Host:</b>	Rabbit

# Datasheet

Version: 3.0.0  
Revision date: 22 Aug 2025



**Recommended dilutions:** WB: 1/1000, IHC-P: 1/10 - 1/50, FCM: 1/10 - 1/50. Not tested in IHC-F. Optimal dilutions/concentrations should be determined by the end user.

**Conjugation:** Unconjugated

**Immunogen:** Human Vimentin recombinant protein.

**Isotype:** IgG

**Form:** Liquid

**Purification:** Purified through a protein A column, followed by peptide affinity purification.

**Storage:** Aliquot and store at -20°C. Avoid repeated freeze/thaw cycles.

**UniProt Primary AC:** P08670 ([UniProt](#), [ExPASy](#))

**KEGG:** hsa:7431

**String:** [9606.ENSP00000446007](#)

**Molecular Weight:** Calculated MW: 53.7 kDa

**Buffer:** PBS containing 0.09% sodium azide.

**Note:** THIS PRODUCT IS FOR RESEARCH USE ONLY. NOT FOR USE IN DIAGNOSTIC, THERAPEUTIC OR COSMETIC PROCEDURES. NOT FOR HUMAN OR ANIMAL CONSUMPTION.