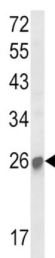
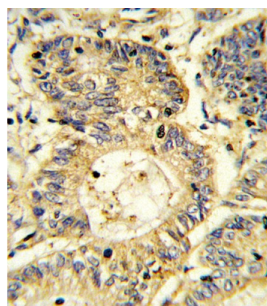
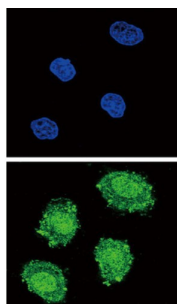


Suppressor of Cytokine Signaling 1 (SOCS1) Antibody

Catalogue No.: abx034107



SOCS1 is a member of the STAT-induced STAT inhibitor (SSI), also known as suppressor of cytokine signaling (SOCS), family. SSI family members are cytokine-inducible negative regulators of cytokine signaling.

Target: Suppressor of Cytokine Signaling 1 (SOCS1)

Clonality: Polyclonal

Reactivity: Mouse, Rat

Tested Applications: ELISA, WB, IHC, IF/ICC, FCM

Host: Rabbit

Recommended dilutions: WB: 1/1000, IHC-P: 1/10 - 1/50, IF/ICC: 1/10 - 1/50, FCM: 1/10 - 1/50. Not tested in IHC-F. Optimal dilutions/concentrations should be determined by the end user.

Datasheet

Version: 4.0.0
Revision date: 13 Sep 2025



| | |
|----------------------------|--|
| Conjugation: | Unconjugated |
| Immunogen: | KLH-conjugated synthetic peptide between 35-66 amino acids from the N-terminal region of human SOCS1. |
| Isotype: | IgG |
| Form: | Liquid |
| Purification: | Purified Rabbit Polyclonal Antibody. |
| Storage: | Aliquot and store at -20°C. Avoid repeated freeze/thaw cycles. |
| UniProt Primary AC: | O15524 (UniProt , ExPASy) |
| Gene Symbol: | SOCS1 |
| NCBI Accession: | NP_003736.1 |
| KEGG: | hsa:8651 |
| String: | 9606.ENSP00000329418 |
| Molecular Weight: | Calculated MW: 23.6 kDa |
| Buffer: | PBS containing 0.09% sodium azide. |
| Note: | THIS PRODUCT IS FOR RESEARCH USE ONLY. NOT FOR USE IN DIAGNOSTIC, THERAPEUTIC OR COSMETIC PROCEDURES. NOT FOR HUMAN OR ANIMAL CONSUMPTION. |