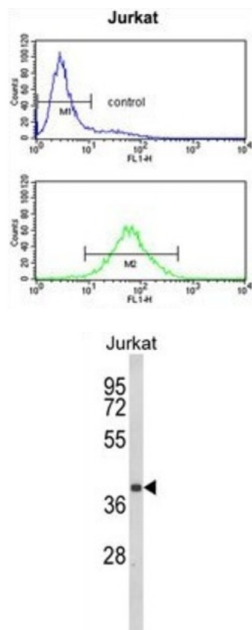


C-C Chemokine Receptor Type 3 (CCR3) Antibody

Catalogue No.: abx034113



CCR3 is a receptor for C-C type chemokines. It belongs to family 1 of the G protein-coupled receptors. This receptor binds and responds to a variety of chemokines, including eotaxin (CCL11), eotaxin-3 (CCL26), MCP-3 (CCL7), MCP-4 (CCL13), and RANTES (CCL5). It is highly expressed in eosinophils and basophils, and is also detected in TH1 and TH2 cells, as well as in airway epithelial cells. This receptor may contribute to the accumulation and activation of eosinophils and other inflammatory cells in the allergic airway. It is also known to be an entry co-receptor for HIV-1.

Target: C-C Chemokine Receptor Type 3 (CCR3)

Clonality: Polyclonal

Reactivity: Human

Tested Applications: ELISA, WB, FCM

Host: Rabbit

Recommended dilutions: WB: 1/1000, FCM: 1/10 - 1/50. Optimal dilutions/concentrations should be determined by the end user.

Conjugation: Unconjugated

Immunogen: KLH-conjugated synthetic peptide between 291-318 amino acids from the Central region of human CCR3.

Isotype: IgG

Datasheet

Version: 3.0.0

Revision date: 23 Jun 2025



Form:	Liquid
Purification:	Purified through a protein A column, followed by peptide affinity purification.
Storage:	Aliquot and store at -20°C. Avoid repeated freeze/thaw cycles.
UniProt Primary AC:	P51677 (UniProt , ExPASy)
KEGG:	hsa:1232
String:	9606.ENSP00000441600
Molecular Weight:	Calculated MW: 41 kDa
Buffer:	PBS containing 0.09% sodium azide.
Specificity:	Predicted to react with Monkey CCR3.
Note:	THIS PRODUCT IS FOR RESEARCH USE ONLY. NOT FOR USE IN DIAGNOSTIC, THERAPEUTIC OR COSMETIC PROCEDURES. NOT FOR HUMAN OR ANIMAL CONSUMPTION.

For Reference Only