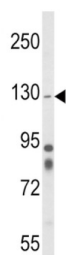
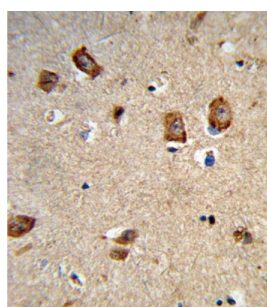


Integrin Alpha 1 (ITGA1) Antibody

Catalogue No.: abx034116



WB analysis of Mouse cerebellum tissue lysates (35 µg/lane), using ITGA1 antibody.



IHC-P analysis of Human brain tissue, using ITGA1 antibody.

Integrin Alpha 1 (ITGA1) is the alpha 1 subunit of integrin receptors. This protein heterodimerizes with the beta 1 subunit to form a cell-surface receptor for collagen and laminin. The heterodimeric receptor is involved in cell-cell adhesion and may play a role in inflammation and fibrosis. The alpha 1 subunit contains an inserted (I) von Willebrand factor type I domain which is thought to be involved in collagen binding.

Target: Integrin Alpha 1 (ITGA1)

Clonality: Polyclonal

Reactivity: Human, Mouse

Tested Applications: ELISA, WB, IHC

Host: Rabbit

Recommended dilutions: WB: 1/1000, IHC-P: 1/10 - 1/50. Not tested in IHC-F. Optimal dilutions/concentrations should be determined by the end user.

Conjugation: Unconjugated

Immunogen: KLH-conjugated synthetic peptide between 727-755 amino acids from the Central region of human ITGA1.

Isotype: IgG

Datasheet

Version: 3.0.0
Revision date: 23 Jun 2025



Form:	Liquid
Purification:	Purified through a protein A column, followed by peptide affinity purification.
Storage:	Aliquot and store at -20°C. Avoid repeated freeze/thaw cycles.
UniProt Primary AC:	P56199 (UniProt , ExPASy)
KEGG:	hsa:3672
String:	9606.ENSP00000282588
Molecular Weight:	Calculated MW: 131 kDa
Buffer:	PBS containing 0.09% sodium azide.
Specificity:	Recognizes proline-hydroxylated sequence G-F-P-G-E-R in collagen. Involved in anchorage-dependent, negative regulation of EGF-stimulated cell growth.
Note:	THIS PRODUCT IS FOR RESEARCH USE ONLY. NOT FOR USE IN DIAGNOSTIC, THERAPEUTIC OR COSMETIC PROCEDURES. NOT FOR HUMAN OR ANIMAL CONSUMPTION.

For Reference Only