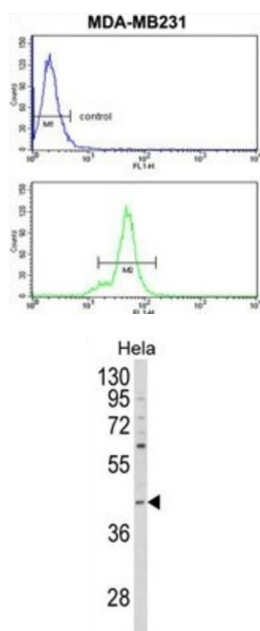


## Cytoplasmic Protein NCK1 (NCK1) Antibody

Catalogue No.: abx034124



NCK1 is one of the signaling and transforming proteins containing Src homology 2 and 3 (SH2 and SH3) domains. It is located in the cytoplasm and is an adaptor protein involved in transducing signals from receptor tyrosine kinases to downstream signal recipients such as RAS.

**Target:** Cytoplasmic Protein NCK1 (NCK1)

**Clonality:** Polyclonal

**Reactivity:** Human

**Tested Applications:** ELISA, WB, FCM

**Host:** Rabbit

**Recommended dilutions:** WB: 1/1000, FCM: 1/10 - 1/50. Optimal dilutions/concentrations should be determined by the end user.

**Conjugation:** Unconjugated

**Immunogen:** KLH-conjugated synthetic peptide between 3-29 amino acids from the N-terminal region of human NCK1.

**Isotype:** IgG

**Form:** Liquid

# Datasheet

Version: 4.0.0  
Revision date: 06 Oct 2025



<b>Purification:</b>	Purified through a protein A column, followed by peptide affinity purification.
<b>Storage:</b>	Aliquot and store at -20°C. Avoid repeated freeze/thaw cycles.
<b>UniProt Primary AC:</b>	P16333 ( <a href="#">UniProt</a> , <a href="#">ExPASy</a> )
<b>Gene Symbol:</b>	NCK1
<b>KEGG:</b>	hsa:4690
<b>String:</b>	<a href="#">9606.ENSP00000417273</a>
<b>Molecular Weight:</b>	Calculated MW: 42.9 kDa
<b>Buffer:</b>	PBS containing 0.09% sodium azide.
<b>Specificity:</b>	Predicted to react with Mouse NCK1.
<b>Note:</b>	THIS PRODUCT IS FOR RESEARCH USE ONLY. NOT FOR USE IN DIAGNOSTIC, THERAPEUTIC OR COSMETIC PROCEDURES. NOT FOR HUMAN OR ANIMAL CONSUMPTION.

For Reference Only