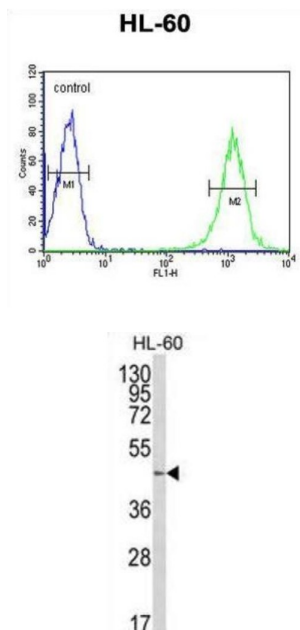


Beta-1,4-Galactosyltransferase 1 (B4GALT1) Antibody

Catalogue No.: abx034145



B4GalT1 is an enzyme that participates both in glycoconjugate and lactose biosynthesis. For the first activity, the enzyme adds galactose to N-acetylglucosamine residues that are either monosaccharides or the nonreducing ends of glycoprotein carbohydrate chains. The second activity is restricted to lactating mammary tissues where the enzyme forms a heterodimer with alpha-lactalbumin to catalyze $\text{UDP-galactose} + \text{D-glucose} \rightleftharpoons \text{UDP} + \text{lactose}$. The two enzymatic forms result from alternate transcription initiation sites and post-translational processing.

Target: Beta-1,4-Galactosyltransferase 1 (B4GALT1)

Clonality: Polyclonal

Reactivity: Human

Tested Applications: ELISA, WB, FCM

Host: Rabbit

Recommended dilutions: WB: 1/1000, FCM: 1/10 - 1/50. Optimal dilutions/concentrations should be determined by the end user.

Conjugation: Unconjugated

Immunogen: KLH-conjugated synthetic peptide between 329-358 amino acids from the C-terminal region of human B4GalT1.

Isotype: IgG

Datasheet

Version: 2.0.0

Revision date: 28 Jun 2025



Form:	Liquid
Purification:	Purified through a protein A column, followed by peptide affinity purification.
Storage:	Aliquot and store at -20°C. Avoid repeated freeze/thaw cycles.
UniProt Primary AC:	P15291 (UniProt , ExPASy)
KEGG:	hsa:2683
String:	9606.ENSP00000369055
Molecular Weight:	Calculated MW: 43.9 kDa
Buffer:	PBS containing 0.09% sodium azide.
Specificity:	Predicted to react with Mouse and Cow B4GALT1.
Note:	THIS PRODUCT IS FOR RESEARCH USE ONLY. NOT FOR USE IN DIAGNOSTIC, THERAPEUTIC OR COSMETIC PROCEDURES. NOT FOR HUMAN OR ANIMAL CONSUMPTION.

For Reference Only